



**MASSEY  
UNIVERSITY**

TE KUNENGA KI PŪREHUROA

UNIVERSITY OF NEW ZEALAND

# YOUR INTERNATIONAL PROSPECTUS 2020

**RANKED IN THE  
TOP 300 IN  
THE WORLD**

SOURCE: 2020 QS WORLD  
UNIVERSITY RANKINGS






# WELCOME



Massey has a long, proud tradition of teaching and research excellence. Its heritage, geographic spread over three major cities, range of programmes and the flexibility of its distance teaching all mean it offers students from around the world the ability to tailor their study to meet their needs and at the same time connect closely with industry, professional organisations and local communities.

Massey has more than 5000 international students each year from 100 countries. It delivers teaching programmes in seven other countries, and has international teaching partnerships with tertiary institutions in 15 nations.

We recognise that choosing to leave your own country in order to achieve academic qualifications is a life-changing decision. I warmly invite you to be part of our diverse and stimulating student community.

Professor Jan Thomas  
Vice-Chancellor, Massey University  
 @ProfJanThomas

## CONTENTS

- 1 Our campuses
- 2 Commercial leadership
- 4 Creativity in design, fine arts, music and creative media production
- 6 Global health and well-being
- 8 Critical thinking in our global community
- 10 Advancing science, technology and agriculture
- 12 Accommodation and living costs
- 13 Foundation and English language pathways
- 13 Student exchange
- 14 International student support and services
- 15 2020 Programmes available to international students in New Zealand
- 25 Study online from your country
- 26 2020 Online programmes available to international students
- 31 Entry requirements for international students
- 32 Academic entry requirements by country
- 34 How to apply

### UPDATED OCTOBER 2019

Please note: The information contained in this publication is indicative of the fees and offerings available in 2020. This information is subject to change. While all reasonable efforts have been made to ensure listed programmes are offered and regulations and fees are up to date, the University reserves the right to change the content or method of presentation, or to withdraw any qualification or part thereof, annually increase fees or impose limitations on enrolments.

For the most up to date information please go to [massey.ac.nz/international](https://massey.ac.nz/international)





# OUR CAMPUSES

## AUCKLAND

- > A beautiful campus with state-of-the-art teaching and learning facilities
- > Based in a diverse, multi-cultural city of 1.5 million people
- > A culture that fosters innovation through strong connections with industry, including an on-site business incubator
- > High quality academic programmes taught by world-class researchers and teachers, including four Distinguished Professors in sciences and humanities and social sciences

[massey.ac.nz/auckland](https://massey.ac.nz/auckland)



CREDIT: CHRIS McLENNAN

CREDIT: CEDA



## MANAWATŪ CAMPUS IN PALMERSTON NORTH

- > An international campus with staff and students from over 80 countries
- > World-class academic programmes, teachers and researchers
- > Specialities including Veterinary Science, Agriculture and Aviation
- > Great sporting facilities, a state-of-the-art food plant and farms
- > Affordable accommodation and living
- > A safe, friendly young person's city - a third of its population are aged 15 to 30 years

[massey.ac.nz/manawatu](https://massey.ac.nz/manawatu)



CREDIT: CEDA

## WELLINGTON

- > A friendly, vibrant and creative place
- > Home to New Zealand's most distinguished School of Design
- > World-class research centres for public health, sleep, Māori health, disaster research, and tertiary teaching excellence.
- > Ranked the second most liveable city in the world in the Quality of Life survey by Deutsche Bank
- > Compact and set between a magnificent harbour and green hills

[massey.ac.nz/wellington](https://massey.ac.nz/wellington)



IMAGE VIA WELLINGTONNZ.COM



# COMMERCIAL LEADERSHIP

## MASSEY BUSINESS SCHOOL

At Massey Business School, rather than just study business we believe our students should practice business. That is why we partner closely with many of New Zealand's leading companies. A range of internships and opportunities to interact with actual businesses are built into our programmes.

Today's students need skills that can take them to the top of the business world anywhere, so we focus on relevant and future-focused learning that is global in its application.

Massey Business School will get your career started from a strong foundation and ensure you have the skills to succeed, no matter where your future takes you.

- > Accountancy
- > AgriCommerce
- > Analytics
- > Aviation
- > Business Administration
- > Business Studies
- > Communication
- > Doctor of Philosophy (PhD)
- > Economics
- > Entrepreneurship and Innovation
- > Finance
- > Health Service Management
- > Human Resource Management and Employment Relations
- > International Business
- > Journalism
- > Management
- > Māori and Indigenous
- > Marketing
- > Organisational Technology Management
- > Professional Accountancy and Finance
- > Property
- > Sport Management
- > Strategic Communication
- > Sustainability

[massey.ac.nz/business](https://massey.ac.nz/business)

## RESEARCH EXCELLENCE

Massey University's world-class, multidisciplinary research creates innovative responses to the challenges faced in today's business environment. Examples include:

- > The [Fin-Ed Centre](#) works to help New Zealanders become more financially savvy by improving their knowledge, attitudes and behaviour towards money.
- > The [Centre for Advanced Retail Studies](#) is the only research centre in New Zealand focused on this exciting, diverse, dynamic and growing industry. We are defining retail research and business engagement in New Zealand.
- > The [Healthy Work Group](#) have developed a strong research platform for theoretical studies and applied projects in the general area of workplace health, safety and well-being, including factors related to the organisational and psychosocial work environment, and the design of healthy work.

## ACADEMIC EXCELLENCE

### Mohan Dutta Professor



Professor Mohan Dutta holds the Dean's Chair in Communication at the Massey Business School. He is also the director of CARE, a research hub that uses a culture-centred approach to help marginalised communities find a voice.

Professor Dutta challenges the idea that academic research should divorce itself from advocacy. He believes CARE offers a framework for "action research" that helps communities to achieve social justice and better health and well-being.

The centre's current projects include finding grassroots solutions to indigenous health issues and responding to food insecurity in India; supporting low-wage migrant workers in Singapore to speak out about their living and working conditions; and developing community-based interventions for HIV prevention.

## SUCCESSFUL GRADUATES

### Andrea Li, China Master of Professional Accountancy and Finance (MPAF) Group Accountant



*"As a first year student at Massey University, I was deeply impressed with its cultural atmosphere and historical significance."*

*"I was delighted that I got the chance to complete Massey's MPAF programme with its first class technology and very experienced professors. During my two-year degree, I had opportunities to discuss academic questions with fellow students from different nationalities, to get answers from experienced professors, spend time on research reports that were realistic, and experience exam questions where I could apply academic knowledge as well as real world experience."*

*"The MPAF at Massey is a very popular degree in New Zealand and it attracts international students from all over the world. I got a job offer only two months after I completed my MPAF degree. Now, I am working at a NASDAQ listed company in a group accountant role. I believe any student who chooses the MPAF programme will greatly enjoy studying at Massey University."*

## WORLD RANKING HIGHLIGHTS



Massey Business School holds the prestigious AACSB accreditation.

## CAREER POSSIBILITIES

- > Agricultural Economist
- > Analyst
- > Bank Manager
- > Business Analyst
- > Capital Budgeting Analyst
- > Chartered Accountant
- > Communications Advisor
- > Economist
- > Entrepreneur
- > Farm Consultant
- > Farm Manager
- > Financial Analyst
- > Human Resources Manager
- > Information Analyst
- > Investment Banking Analyst
- > IT Project Manager
- > Loans Officer
- > Marketing Manager
- > Policy Advisors
- > Property Developer
- > Property Manager
- > Public Relations Manager
- > Purchasing Manager
- > Rural Consultant
- > Rural Valuation
- > Sales
- > Securities Analyst
- > Share Broker
- > Small Business Manager
- > Speech Writer
- > Sport Development
- > Sport Events
- > Sport Facilities And Venues
- > Writer





# CREATIVITY IN DESIGN, FINE ARTS, MUSIC AND CREATIVE MEDIA PRODUCTION

## COLLEGE OF CREATIVE ARTS

Toi Rauwharangi is New Zealand's premier provider of creative arts education, with comprehensive internationally benchmarked, future-focused programmes, innovative studio-based learning, high levels of undergraduate and postgraduate student achievement and a distinctive contribution to Māori and Pasifika creative arts practice.

Our comprehensive programmes are actively engaged across a broad range of creative industries, agencies and start-ups.

- > Commercial Music
- > Creative Media Production
- > Design
- > Fine Arts
- > Māori Visual Arts

[creative.massey.ac.nz](http://creative.massey.ac.nz)



## RESEARCH EXCELLENCE

Massey University's College of Creative Arts is New Zealand's premiere research-led creative arts college. The College's world-class standing has grown through the quality and reputation of its faculty and the achievements of its students. It is proud to include a design school that is ranked No.2 in the Asia-Pacific region by Red Dot International, and to have been awarded Substantial Equivalency by NASAD (the US National Association of Art and Design).

The College of Creative Arts has the largest number of top-ranked researchers in design and visual arts and crafts in New Zealand, according to the national Performance-Based Research Funding Round (2019). Faculty are globally connected practitioners, who – along with industry standard facilities – offer a stimulating and highly innovative learning environment.

The College is a national leader in connecting the benefits of creative endeavour to New Zealand's economic growth. Our programmes are comprehensive and industry-connected; through its many networks the College is able to offer cross-disciplinary learning on real world briefs, to ensure that creative arts students are equipped with critical thinking, entrepreneurial attitudes and innovative problem solving skills that prepare them for a variety of career pathways in a rapidly changing global economy. This vibrant and nurturing environment supports researchers at all stages of their career and offers a rich context and transformative experience for a growing number of postgraduate and international students.

## ACADEMIC EXCELLENCE

### Dr Bridget Johnson

Lecturer and major coordinator, Te Rewa o Puanga – the School of Music and Creative Media Production



Dr Bridget Johnson is a sound artist and composer whose work crosses many platforms and media. Her main focus is designing new intuitive interfaces for musical expression. This often manifests in the design of custom-built music performance hardware and software. Her teaching interests lie in developing ways to teach engineering techniques to artists, to further their artistic pursuits. Her expertise lies in new musical interface design, iOS development, music software and hardware development, interactive sound installations, electroacoustic composition, and film scoring.

## SUCCESSFUL GRADUATES

### Megha Sharma, India

Master of Design  
Sustainable Design Consultant

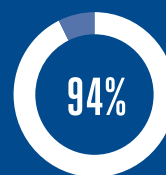


Megha was born in India, and studied fashion design at the Pearl Academy (Delhi), one of India's most prestigious design colleges. In 2016 she took part in Runway to New Zealand, a joint project with New Zealand fashion design tertiary providers, Pearl Academy, the National Institute of Fashion Technology (Delhi) and Education New Zealand. As a result she won an internship with the College of Creative Arts in Wellington, and was so inspired she applied to study her Masters here. Receiving a New Zealand Excellence Award made this a reality, and in 2017 she returned to pursue a Masters in Design at Massey University. She continues to be passionate about sustainable design thinking and human centred design solutions, and has been acknowledged for her sustainable projects in fashion industry at the International Student Based Conference, Malaysia (ISBC) and Runway to New Zealand.

## TOP 100 WORLD RANKING



Massey is ranked in the top 100 in the world for Art and Design according to the QS (Quacquarelli Symonds) rankings.



of design graduates are in full-time or part-time employment, six months after graduating

(Graduate Destination Survey 2018)

## CAREER POSSIBILITIES

- > 3D Animator
- > Advertising Executive
- > Animator
- > Animatronics Artist
- > App Developer
- > App Designer
- > Art Broker
- > Art Director
- > Art Gallery Educator
- > Art Gallery Publicist
- > Art Researcher
- > Artist
- > Artist-In-Residence
- > Audio Producer
- > Camera Operator
- > Company Branding
- > Archivist
- > Concept Artist
- > Creative Director
- > Curator
- > Digital Effects Artist
- > Digital Printer
- > Event Planner
- > Experience Designer
- > Fashion Designer
- > Fashion Photographer
- > Film And Television Editor
- > Filmmaker
- > Games Art Director
- > Games Developer
- > Graphic Designer
- > Gallery Assistant
- > Historian
- > Illustrator
- > Industrial Designer
- > Information Architect
- > Interior Designer
- > Lighting Technician
- > Magazine Stylist
- > Marketing Executive
- > Mechanisms Producer
- > Modelling Technician
- > Motion Capture Animator
- > Multimedia Designer
- > Music Producer
- > Musician
- > Online Game Designer
- > Software programmer



# GLOBAL HEALTH AND WELLBEING

## COLLEGE OF HEALTH

The 21st century brings new challenges and demands both new solutions and new health professionals. A leader within New Zealand, Massey's College of Health takes a fresh approach to optimal health and well-being, and promotes equity and social justice. It embodies the outcome of multiple factors encompassing individual differences, diversity, social determinants and environmental interactions. We make a difference in a wide range of health-related areas like applied social research, health system strengthening, workforce development, environmental health, public health policy, sleep, sport and

exercise, and nutrition. Our specialists focus on preventing illness and injury, understanding the mechanisms of health and well-being, promoting healthy lives, advising on policy that supports these activities, and finding ways to keep people and communities well.

- > Health science
- > Human nutrition and dietetics
- > Nursing
- > Physiology
- > Social work
- > Sport development
- > Sport and exercise

[massey.ac.nz/health](https://massey.ac.nz/health)



## RESEARCH EXCELLENCE

Massey University's College of Health is a dynamic hub of leading academics and researchers working together to solve the global health challenges of the 21st century.

Benefit from the expertise of our world-leading health researchers. Whether you're a student or research collaborator, you will work alongside the most innovative thinkers and experts in New Zealand.

The College of Health hosts several research centres, all focused on improving the health of individuals and communities. Examples include:

- > The [Sleep/Wake Research Centre](#) is a world-class research facility dedicated to unravelling the mysteries of sleep affecting every aspect of our health and well-being, an activity to which we devote roughly a third of our lives. The centre's internationally compliant Time Isolation Unit allows the centre to collaborate in multicentre studies.
- > Our [Centre for Public Health Research](#) works to improve health outcomes for New Zealanders by addressing some of the most serious non-communicable diseases in New Zealand and internationally.
- > Our [Centre for Metabolic Health Research](#) is discovering new ways to improve the quality of life of those affected by metabolic health disorders. Our cross-disciplinary staff and modern facilities allow us to unravel the complex nature of these disorders and apply the results to patient care.

## ACADEMIC EXCELLENCE

### Dr Andy Towers

Associate Dean Learning and Teaching, College of Health



Andy is a Senior Lecturer in the School of Health Sciences at Massey University. He teaches approaches to drug use and rehabilitation at undergraduate and postgraduate levels and his primary research interest is alcohol consumption across the lifespan. With funding from the Health Promotion Agency Andy currently leads an international collaboration of experts from the US, Europe, New Zealand and the World Health Organization in exploring global differences in the patterns, predictors and outcomes of older adults' alcohol use in high and low-to-middle income countries.

As an Associate Dean Learning and Teaching, Andy is leading approaches to teaching excellence across all Schools in the College of Health. His focus is on providing positive and engaging 21st century learning environments through the enhancement of digital teaching practices, the identification of teaching needs, and coordination of learning support for staff and students.

## CURRENT STUDENTS

### Janice Lim, Singapore

PhD candidate, School of Health Sciences



*"I am originally from Singapore and I chose Massey because the lecturers here are top-notch and very knowledgeable, and the facilities are excellent and conducive for learning. I totally enjoy my PhD study as it is something very relevant to human health, and Massey has been at the leading edge of scientific research in human nutrition, and I am truly grateful to be a part of it."*

## WORLD RANKING HIGHLIGHTS



The School of Sport, Exercise and Nutrition is ranked in the top 150 Sport Science Schools and Departments worldwide according to the 2018 Shanghai World Ranking.

Public health at Massey University is ranked in the top 300 in the world by the Shanghai Ranking's Global Ranking of Academic Subjects.

According to New Zealand's Performance-Based Research Fund (PBRF) 2019, our subject areas of research excellence relative to other New Zealand universities are nursing, other health studies, sport and exercise science.

## CAREER POSSIBILITIES

- |   |  |
|---|--|
| > Aged Care                                     | > Local and Central Government                           |
| > Applied Physiology and Animal Welfare         | > Management of Hazardous Substances and Toxic Chemicals |
| > Biosecurity                                   | > Medical Centres and Hospitals                          |
| > Child Health                                  | > Mental Health and Addictions                           |
| > Child Protection                              | > Nursing  |
| > Community Sports and Fitness Centres          | > Policy   |
| > Community Work and Community Development      | > Public Health Agencies                                 |
| > Comparative Physiology                        | > Regional and National Sport Organisations              |
| > Counselling                                   | > Rehabilitation and Disability Support Agencies         |
| > Disaster and Emergency Management             | > Rehabilitation Psychology                              |
| > Drinking Water Assessment                     | > Residential Care                                       |
| > Emergency Departments                         | > School Sport Coordinator                               |
| > Environmental Health Consultancy and Auditing | > Social Work  |
| > Family Health                                 | > Sport Communication                                    |
| > Health and Safety                             | > Sport Development                                      |
| > Health Promotion                              | > Sport Events And Recreation Programmes                 |
| > Health Research                               | > Sport Marketing  |
| > Hospice                                       | > Sport Venues and Facilities                            |
| > Hospitals and Primary Health Care             | > Sports Trainer or Coach of Athletes and Teams          |
| > Injury Prevention Agencies                    | > Youth Support  |
| > Intensive Care                                |  |
| > International Relief Work                     |  |



# CRITICAL THINKING IN OUR GLOBAL COMMUNITY

## COLLEGE OF HUMANITIES AND SOCIAL SCIENCES

Studying the arts will help inspire your intellectual passion. Our wide range of qualifications embraces subjects that will ignite your imagination, enable you to think critically and help you to apply what you learn in the real world. We will challenge your thinking and enable you to be more creative, more innovative and more adaptable. We will teach you valuable skills that allow you to connect with your work, your community and your world.

- > Business Psychology
- > Classical Studies
- > Creative Writing
- > Economics
- > Education
- > Educational Psychology
- > English
- > Environmental Studies
- > Geography
- > History
- > Linguistics
- > Mathematics
- > Media Studies
- > Philosophy
- > Planning Studies
- > Politics
- > Psychology
- > Public & Professional Writing
- > Resource and Environmental Planning
- > Social Anthropology
- > Social Policy
- > Sociology
- > Speech and Language Therapy
- > Statistics
- > Theatre Studies

[massey.ac.nz/cohss](http://massey.ac.nz/cohss)



## RESEARCH EXCELLENCE

Just as digital technology connects the planet, population pressures and climate change increasingly threaten its future. In this context, it can be argued that the approaches we must adopt to living in this century challenge us to be adaptive, responsive and engaged citizens. Massey researchers are seeking to resolve the impact of this emergent new model in the social dynamic and provide meaningful contributions to inform the debate and offer people-focused research to support developments that will enrich our future lives.

Examples of our wide-ranging research projects include:

- > The pedagogy and strategies teachers use to manage and teach languages in multi-level classes.
- > Mental illness, including depression, is part of the wave of chronic illnesses affecting today's population. Massey researchers successfully adapted a cognitive behavioural therapy programme for adult Māori suffering from depression.
- > An award-winning Massey study has explored immigrant economic success and work experience while also reviewing the contributions made to community, culture and social development.

## ACADEMIC EXCELLENCE

### Professor Glenda Anthony

Co-director of the Centre of Excellence for Research in Mathematics Education (CERME)



Professor Anthony uses her portfolio of research to support teachers to learn the work of ambitious mathematics teaching. A Fulbright-Harkness Fellowship enabled her to collaborate with researchers in the United States. Her research programme works towards an agenda of improvement for maths learners - through recruiting and preparing quality teachers, understanding quality teaching, and understanding mathematics learning and learners.

She frequently works with teachers, and regards the task of taking research ideas and making them more accessible to the audiences who might use them as a key responsibility.

## SUCCESSFUL GRADUATES

### Haolun Xu, China

Bachelor of Arts (Politics),

Postgraduate Diploma of Arts (Politics)

Global Communication Officer, Peking University, China



*"Coming to study at Massey University is my fate and one of the best decisions I have ever made. With a strong desire to play my role in shaping a better world I decided to pursue a Bachelor of Arts (Politics) at Massey University."*

*"Studying politics in New Zealand is particularly great. Being a small country means that it is a lot easier to get in touch with government and councils to gain information, develop connections and participate at a local level."*

*"The lecturers at Massey are incredibly supportive and always on hand to answer questions and address any concerns."*

## WORLD RANKING HIGHLIGHTS



## CAREER POSSIBILITIES

- > Advertising and Marketing
- > Agricultural Economist
- > Art and Heritage Work
- > Arts Administrator, Developer or Manager
- > Business Analyst
- > Careers Counsellor
- > Communications
- > Community Development
- > Counsellor
- > Diplomat
- > Economic Consultant
- > Employment Consultant
- > Environmental Planner
- > Film and TV Producer
- > Finance and Banking
- > Foreign Affairs
- > Health Professional
- > Human Resources Manager
- > Human Rights and Social Justice
- > International Development and Diplomacy
- > Journalist
- > Museum Curator
- > Policy Analyst
- > Politics
- > Psychologist
- > Public Relations
- > Publishing, Journalism and Media
- > Resource Management
- > Social Worker
- > Teacher
- > Translator
- > Transport Planner
- > Urban Planner
- > Writer, Editor, Publisher or Researcher
- > Youth Development



# ADVANCING SCIENCE, TECHNOLOGY AND AGRICULTURE

## COLLEGE OF SCIENCES

Our heritage is in agriculture, food and the sciences and today we are among the world leaders in education and research. We also bring our best to new areas including computer science, information technology and construction. These are exciting areas for study and provide excellent opportunities for growth and development.

- > Agriculture
- > Computer Science and Information Technology
- > Construction
- > Engineering
- > Food and Nutrition
- > Fundamental Science
- > Natural and Environmental Science
- > Veterinary and Animal Science

[massey.ac.nz/science](https://massey.ac.nz/science)

## RESEARCH EXCELLENCE

Massey University delivers world-leading research conducted in partnership with the industries and communities we serve. We have a reputation for excellence in innovation and the creation of new knowledge. Our research spans discovery, commercialisation, and scholarship and our strengths are in:

- > Veterinary science
- > Land and food based research
- > Natural, environmental and mathematical sciences

We focus on solving contemporary societal challenges and maintain a commitment to fundamental knowledge discovery. New developments and technology underpin what we do and we enjoy collaborations with the world's prestigious scientific institutions. This makes for world-leading discoveries and complements our teaching and postgraduate programmes.

## ACADEMIC EXCELLENCE

### Associate Professor Ian Bond

Associate Professor Ian Bond is an internationally-recognised computer scientist and astrophysicist. He is the principal investigator for MOA (Microlensing Observations in Astrophysics), an international astronomy study. His research projects at Massey have focused on microlensing, the most recent project developing computer software that has led to the internationally-significant discovery of free-floating 'orphan' planets that has major implications for understanding the dynamics of solar systems.



The MOA study focuses on a segment of roughly 50 million stars at the centre of the Milky Way, which are 25,000 light years away and are a fragment of the estimated 100-400 billion stars and 50 billion planets in the galaxy.

## SUCCESSFUL GRADUATES

### Gail Royston

Bachelor of Construction

Assistant Cost Manager – Beca

Top Young Woman in Construction, New Zealand, 2015

Best Young Women in Construction Finalist, Europe 2016



*"I was able to work and study full-time due to Massey's flexible distance learning. That means that although I've only been out of university for one and a half years I have almost four years of experience in the industry. This has given me the opportunity to work in places like Auckland, Christchurch, Malaysia and now Europe and do what I love - travelling."*

*"The Massey construction degree has helped me get to where I am and allowed me to work on international projects that have English, French and Spanish people working together to deliver projects. Construction is an exciting industry and I'm happy to be part of it. I'm lucky to have such amazing role models and mentors around me that push me to be the best I can be."*

*"The possibilities in this industry are endless and every day is different, the hardest part is choosing where to go next..."*

## WORLD RANKING HIGHLIGHTS



Massey is ranked 22nd in the world (and first in New Zealand) in agriculture, and 23rd in the world (and first in New Zealand) for Veterinary Science, according to the QS (Quacquarelli Symonds) rankings.

## CAREER POSSIBILITIES

- |                                     |                                |
|-------------------------------------|--------------------------------|
| > Agricultural Sales Representative | > Mathematician                |
| > Banking Fraud Detection Analyst   | > Mechanical Product Engineer  |
| > Biodiversity Management           | > Microbiologist               |
| > Biotechnology Companies           | > Network Administrator        |
| > Business Analyst                  | > Nutrition Adviser            |
| > Chemical Processing               | > Occupational Health Advice   |
| > Coastal Researcher                | > Operations Manager           |
| > Construction Project Management   | > Pharmaceutical Manufacturing |
| > Crop Research                     | > Physiologist                 |
| > Customer Insight Analyst          | > Plant Biologist              |
| > Data Science Engineer             | > Plant Breeding               |
| > Developer                         | > Plant Conservation           |
| > Ecologist                         | > Policy Analyst               |
| > Electronics Engineer              | > Process Automation Engineer  |
| > Embedded Software Engineer        | > Product Developer            |
| > Energy Development Engineer       | > Project Manager              |
| > Environmental Planner             | > Property Developer           |
| > Exercise Consultant               | > Purchasing Manager           |
| > Facilities Management             | > Quantity Surveyor            |
| > Farm Consultant                   | > Rehabilitation Psychology    |
| > Farm Manager                      | > Robotics Engineer            |
| > Fisheries                         | > Rural Valuer                 |
| > Food Technologist                 | > Sales Engineer               |
| > Horticulture                      | > School Teacher               |
| > International Relief Work         | > Scientist                    |
| > Landscape Management              | > Software Engineer            |
| > Livestock Trading                 | > Sport Scientist              |
| > Machine Learning Specialist       | > Statistician                 |
| > Manufacturing Engineer            | > Systems Analyst              |
|                                     | > Technology Officer           |
|                                     | > User Support Specialist      |
|                                     | > Veterinarian                 |
|                                     | > Veterinary Technologist      |
|                                     | > Wildlife Biologist           |
|                                     | > Zoologist                    |



# ACCOMMODATION AND LIVING COSTS

## MASSEY HALLS

Massey Halls are all about giving you the best student experience and support during your university years. Our Halls have dedicated staff to help navigate your priorities, connect you with other residents and encourage you to join the many events and activities that are available.

## WHY CHOOSE MASSEY HALLS?

### Location

We are situated either on campus or within a short walking distance to the University. Everything you need is nearby, such as shops, bars and restaurants.

### 24/7 support

We have a team of staff to support you 24/7 and our Residential Assistants live on campus.

### Friendships

We focus on building our community from the start. You will live within a community of Massey University students, and will have lots of opportunities to meet people and make life-long friends from around the world.

### Better grades

Research shows that students living in university-provided accommodation tend to achieve better results.

### Student leadership opportunities

We like to give our residents opportunities to take on leadership roles, such as becoming a floor warden, hall representative and – once you have been with us a year – you can apply to join our team and become a Residential Assistant.

### Activities and events

We offer a full, varied residential life programme, so there is no excuse not to get involved. We run welcome programmes to help you settle into life at Massey University. We like to think we are your home away from home, where you feel like you are among friends and family.

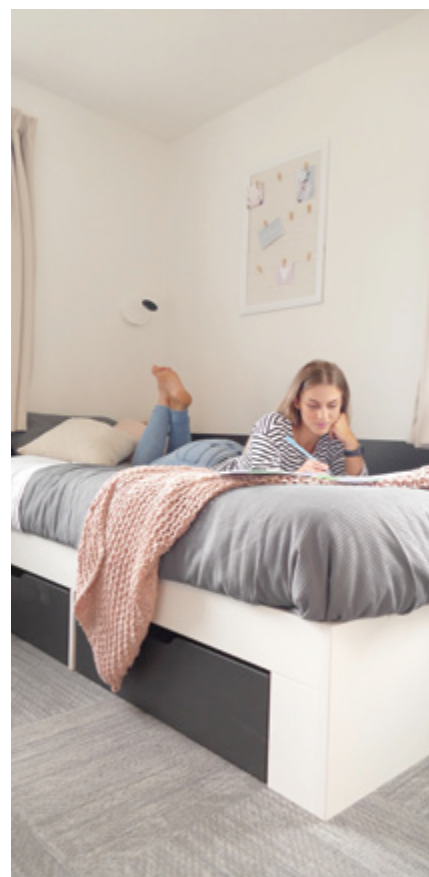
### Safe and secure

Our buildings are safe and secure, with key fob access to the buildings. We have a security team that does regular checks through the day and night.

## HOMESTAY

Our homestay option gives you the opportunity to live with a local family in their home and experience New Zealand culture. This is a great way to improve your English language.

You will be provided with three meals a day and have the support from our homestay pastoral care team.



## ACCOMMODATION COSTS

ACCOMMODATION OPTION	AUCKLAND CAMPUS	MANAWATŪ CAMPUS	WELLINGTON CAMPUS
Accommodation Type	First and only Qualmark Accredited 5 Star Student Accommodation in New Zealand with Gold Star Sustainability Award. All rooms are single occupancy <ul style="list-style-type: none"> <li>&gt; Halls of Residence: meals provided</li> <li>&gt; 4/5 bedroom apartments: no meals</li> <li>&gt; Studio units: No meals</li> </ul>	Manawātū; the campus where Massey began. <ul style="list-style-type: none"> <li>&gt; Various halls: meals provided</li> <li>&gt; Various halls: no meals</li> <li>&gt; Family units: no meals</li> </ul>	Situated in the Heart of Wellington. The Cube <ul style="list-style-type: none"> <li>&gt; 3/5 bedroom apartments: no meals</li> <li>&gt; Studio units: no meals</li> <li>Kainga Rua               <ul style="list-style-type: none"> <li>&gt; Single rooms: no meals</li> <li>&gt; Twin-share rooms: no meals</li> </ul> </li> </ul>
Massey Halls Catered	\$15,918: 42 weeks	From \$11,037: 38 weeks	Not Available
Massey Halls Self-Catered	From \$10,920: 42 weeks	From \$6240: 38 weeks	From \$9366: 42 weeks
Homestay Catered	\$305 per week	\$255 per week	\$285 per week

## LIVING COSTS

As well as tuition fees, you will need to pay for textbooks, non-tuition fees and your personal expenses. Find out more: [massey.ac.nz/fees](https://massey.ac.nz/fees)

At the airport, on arrival in New Zealand, you are required to pay a \$35 International Visitor and Tourism Conservation Levy.

If you enter New Zealand on a student visa, Immigration NZ requires you to have NZ\$15,000 available in addition to your course fees for each year you'll be studying in New Zealand, plus an additional NZ\$2,000 to cover a return ticket home. Living costs can vary considerably depending upon accommodation option, location and personal spending habits, so you may require more money than this. Find out more: [immigration.govt.nz](https://immigration.govt.nz)

### Notes:

- > Costs are approximate based on 2019 fees and are in New Zealand dollars (NZD)
- > Auckland is the largest of the three cities, so you can expect the cost of living to be higher
- > In some catered accommodation options there may be different meal plans available. Some accommodation options may also have additional costs for items such as laundry and car parking, depending on location. See website for more details [massey.ac.nz/accommodation](https://massey.ac.nz/accommodation)
- > Private accommodation options can be found on [trademe.co.nz](https://trademe.co.nz)

# FOUNDATION AND ENGLISH LANGUAGE PATHWAYS

## FOUNDATION PATHWAYS

Our pre-degree foundation qualifications enable you to meet the academic and English language entry requirements for admission to university. Programmes are delivered in New Zealand, online, and with partners offshore.

For more information or to apply, please visit:

**[pace.ac.nz](http://pace.ac.nz)** or contact us at:

**[uniprep@massey.ac.nz](mailto:uniprep@massey.ac.nz)**

## ENGLISH LANGUAGE PATHWAYS

Our English language courses and qualifications enable you develop your English language proficiency and to meet the University's academic English language requirements for foundation, undergraduate or postgraduate studies.

For more information or to apply, please visit:

**[pace.ac.nz](http://pace.ac.nz)** or contact us at:

**[uniprep@massey.ac.nz](mailto:uniprep@massey.ac.nz)**

## CUSTOMISED STUDY TOURS

With more than 30 years' experience of customising study tours for university and high school groups from around the world, we have the expertise to design and deliver a study tour to meet the goals and expectations of your group.

For more information or to apply, please visit:

**[pace.ac.nz](http://pace.ac.nz)** or contact us at:

**[uniprep@massey.ac.nz](mailto:uniprep@massey.ac.nz)**

# STUDENT EXCHANGE



As an international student, you are also eligible to participate in our student exchange programme and can therefore choose to study for one or two semesters of your degree at over 200 institutions in more than 25 countries.

> [massey.ac.nz/studentexchange](http://massey.ac.nz/studentexchange)



# INTERNATIONAL STUDENT SUPPORT AND SERVICES



## INTERNATIONAL STUDENT SUPPORT

Our International Student Support teams are here to help you succeed academically and personally throughout your studies. We can help with any questions you may have including: visa renewals, insurance, accommodation, transport to campus and general campus information. We are here to support your well-being and can help you connect with the relevant support services available to you. We run an International Registration and Welcome programme to help you settle in and run a number of events and activities throughout the semester.

[isso.massey.ac.nz](https://isso.massey.ac.nz)

## STUDY SUPPORT

The Centre for Teaching and Learning aims to help you develop good study practices and examination skills. They offer regular workshops as well as individual consultations.

[learning.massey.ac.nz](https://learning.massey.ac.nz)

## CAREER SERVICES

Career Services can help you to explore and plan your career, source job opportunities, build your employability skills. We work with employers and academic staff to offer you career events, industry presentations, career and skills workshops and seminars. [massey.ac.nz/careers](https://massey.ac.nz/careers)

## HEALTH SERVICES

There are Health and Counselling Centres on all three of our campuses. The Health and Counselling Centre is designed to provide

students with a comprehensive range of professional and confidential health services. These services are aimed to keep you active, healthy and able to achieve your goals at University.

[massey.ac.nz/health-and-counselling](https://massey.ac.nz/health-and-counselling)

## RECREATION

Massey is committed to ensuring an active, enriching campus life and has excellent facilities on each of our campuses as well as associations and clubs to meet the needs of the student community. We have over 100 student-run clubs where you can meet, have fun and make new friends. [recreation.massey.ac.nz](https://recreation.massey.ac.nz)

## THE EDUCATION (PASTORAL CARE OF INTERNATIONAL STUDENTS) CODE OF PRACTICE 2016

The Ministry of Education has established a comprehensive Code of Practice for the Pastoral Care of International Students. Massey University is bound by this Code. Copies of the Code are available from the NZQA.

[nzqa.govt.nz](https://nzqa.govt.nz)

## IMMIGRATION

All international students must hold a valid student visa to be eligible to study in New Zealand. Full details of immigration requirements, advice on rights to employment in New Zealand while studying, and reporting requirements are available from Immigration New Zealand. [immigration.govt.nz](https://immigration.govt.nz)

## STUDY AND WORK IN NEW ZEALAND

New Zealand Immigration provides options for students to work while studying. Depending on your area of study, you may also have the opportunity to stay and work in New Zealand for up to four years, and possibly even gain residence.

[naumainz.studyinnewzealand.govt.nz](https://naumainz.studyinnewzealand.govt.nz)

## ELIGIBILITY FOR HEALTH SERVICES

Most international students are not entitled to publicly funded health services while in New Zealand. If you receive medical treatment during your visit, you may be liable for the full costs of that treatment. Full details on entitlements to publicly funded health services are available through the Ministry of Health. [moh.govt.nz](https://moh.govt.nz)

## MEDICAL AND TRAVEL INSURANCE

International students (including group students) must have appropriate and current medical and travel insurance while in New Zealand. Insurance coverage should include travel costs, medical care, and costs associated with repatriation, expatriation, and funeral expenses. Our preferred provider is Studentsafe.

[studentassiss.co.nz](https://studentassiss.co.nz)

## ACCIDENT INSURANCE

The Accident Compensation Corporation provides accident insurance for all New Zealand citizens, residents, and temporary visitors to New Zealand, but you may still be liable for all other medical and related costs. [acc.co.nz](https://acc.co.nz)

## SETTLING INTO LIFE IN NEW ZEALAND

NauMai NZ is a digital platform developed to support international students as they transition to a new culture and life in New Zealand. This platform provides reliable and up-to-date information about living and studying in New Zealand. [naumainz.studyinnewzealand.govt.nz](https://naumainz.studyinnewzealand.govt.nz)

## INTERNATIONAL CONTRACT DISPUTE RESOLUTION SCHEME (DRS)

DRS is an independent dispute resolution scheme established by the New Zealand Government. Its objective is to encourage swift settlement of contractual and financial disputes between international students and their providers in New Zealand. [istudent.org.nz](https://istudent.org.nz)

## NEW ZEALAND LANGUAGE AND CULTURE

Massey University offers a free online programme that introduces you to Māori language and culture. [massey.ac.nz/toromai](https://massey.ac.nz/toromai)



# 2020 PROGRAMMES AVAILABLE TO INTERNATIONAL STUDENTS IN NEW ZEALAND

This section provides a guide to programmes available to international students interested in studying at a Massey University campus in New Zealand. Tuition fees quoted are estimates only, are in New Zealand dollars and include GST, and are based on 2020 fees.

**Tuition fees quoted are based on 120 credits of study within the programmes, unless stated otherwise.**

**Each 15 credit course requires approximately 10-12.5 hours each week of class and study time.** You can search the Massey University website: [massey.ac.nz](http://massey.ac.nz) for full programme details. If you are ready to apply, please visit [massey.ac.nz/international](http://massey.ac.nz/international)

## ENGLISH LANGUAGE AND UNIVERSITY PREPARATION

Programme	Auckland	Palmerston North	Wellington	Start date	Duration	Cost
English Language Proficiency	A	P		Every 5 weeks	5-40 weeks	NZ\$2150 per 5-week course
Direct Entry English Pathway						
Foundation Certificate in Academic English (UG DEEP)	A	P		Feb, July or Sep	16 weeks	NZ\$9960 per semester
Foundation Certificate in Advanced Academic English (PG DEEP)	A	P		Feb, July or Sep	16 weeks	NZ\$9960 per semester
Certificate in Foundation Studies (Full Foundation)	A	P	W	A, P: Feb, July or Nov W: Feb only	2 semesters	NZ\$21,820
Certificate of University Preparation (Fast-track Foundation)	A	P	W	A, P: Feb, July or Nov W: Feb or July only	1 semester	NZ\$10,910 per semester

## CERTIFICATES AND DIPLOMAS

Programme	Auckland	Palmerston North	Wellington	Start date	Duration	Cost
Certificate in Arts	A	P	W	Feb or July	1 semester	NZ\$13,260 per semester
Certificate in Business Studies	A	P	W	Feb or July	1 semester	NZ\$14,680 per semester
Certificate in Science and Technology	A	P		Feb, July or Nov	1 semester	NZ\$16,390 per semester
Certificate in Visual Arts			W	Feb, July or Nov	1 semester	NZ\$17,660 per semester
Diploma in Arts	A	P		Feb or July	1 year	NZ\$26,530-\$32,780
Diploma in Business Studies	A	P	W	Feb or July	1 year	NZ\$29,370
Diploma in Communication	A	P	W	Feb or July	1 year	NZ\$26,530
Diploma in Science and Technology	A	P		Feb, July or Nov	1 year	NZ\$35,330
Diploma in Visual Arts			W	Feb or July or Nov	1 year	NZ\$32,650

## STUDY ABROAD

Massey University welcomes students from around the world to complete a semester or year on the Study Abroad or Student Exchange programme. [massey.ac.nz/studyabroad](http://massey.ac.nz/studyabroad)

Programme	Auckland	Palmerston North	Wellington	Start date	Duration	Cost
Study Abroad Programme	A	P	W	Feb or July	1 semester	NZ\$12,070 per semester
National Expedition and Internship				June	6 weeks	NZ\$8,276 for 6 weeks



## BACHELOR'S DEGREES

Tuition fees quoted are based on 120 credits of study within the programmes, unless stated otherwise. Please note that most bachelor's degrees are 360 credits, with some being longer. Each 15-credit course requires approximately 10-12.5 hours each week of class and study time.

Programme	Auckland	Palmerston North	Wellington	Start date	Duration	Cost (per 120 credits)
Bachelor of Accountancy	A	P		A: Feb or July P: Feb	3 years	NZ\$29,370
Bachelor of AgriCommerce						
Agricultural Economics		P		Feb or July	3 years	NZ\$29,370
Farm Management		P		Feb or July <sup>1</sup>	3 years	NZ\$32,780
Food Marketing and Retailing		P		Feb or July	3 years	NZ\$29,370
International Agribusiness		P		Feb or July	3 years	NZ\$29,370
Māori Agribusiness		P		Feb or July	3 years	NZ\$29,370
Rural Valuation		P		Feb or July <sup>1</sup>	3 years	NZ\$29,370
Bachelor of Agricultural Science		P		Feb or July	3 years	NZ\$32,780
Bachelor of Animal Science						
Animal Genetics and Breeding		P		Feb	3 years	NZ\$32,780
Animal Nutrition and Growth		P		Feb	3 years	NZ\$32,780
Animal Welfare		P		Feb	3 years	NZ\$32,780
Equine Science		P		Feb	3 years	NZ\$32,780
Bachelor of Applied Economics	A	P		Feb or July	3 years	NZ\$29,370
Bachelor of Arts						
Business Psychology	A	P		Feb or July	3 years	NZ\$32,780
Classical Studies	A	P		Feb or July	3 years	NZ\$26,530
Creative Writing	A	P		Feb or July	3 years	NZ\$26,530
Defence Studies		P		Feb or July	3 years	NZ\$26,530
Economics	A	P		Feb or July	3 years	NZ\$29,370
Education		P		Feb or July	3 years	NZ\$26,530
English	A	P		Feb or July	3 years	NZ\$26,530
Environmental Studies		P		Feb or July	3 years	NZ\$32,780
Geography		P		Feb or July	3 years	NZ\$32,780
History	A	P		Feb or July	3 years	NZ\$26,530
Linguistics	A	P		Feb or July	3 years	NZ\$26,530
Mathematics	A	P		Feb or July	3 years	NZ\$26,530
Media Studies	A	P		Feb or July	3 years	NZ\$26,530
Philosophy	A	P		Feb or July	3 years	NZ\$26,530
Politics	A	P		Feb or July	3 years	NZ\$26,530
Psychology	A	P		Feb or July	3 years	NZ\$32,780
Social Anthropology	A	P		Feb or July	3 years	NZ\$26,530
Social Policy	A			Feb or July	3 years	NZ\$26,530
Sociology	A	P		Feb or July	3 years	NZ\$26,530
Statistics		P		Feb	3 years	NZ\$26,530
Bachelor of Aviation Air Transport Pilot (Aeroplane Option)						
Year 1		P		Jan or July	1 year	NZ\$91,760 (180 credits)
Year 2		P		Jan or July	1 year	NZ\$107,080 (180 credits)
Year 3		P		Jan or July	1 year	NZ\$35,340
Bachelor of Aviation Management		P		Feb or July	3 years	NZ\$29,370
Bachelor of Business						
Accountancy	A	P		A: Feb or July P: Feb	3 years	NZ\$29,370
Economics	A	P		Feb or July	3 years	NZ\$29,370

<sup>1</sup>July start will take 3.5 years to complete

Programme	Auckland	Palmerston North	Wellington	Start date	Duration	Cost (per 120 credits)
Finance	A	P		Feb or July	3 years	NZ\$29,370
Human Resource Management and Employment Relations	A	P		Feb or July	3 years	NZ\$29,370
International Business	A			Feb or July	3 years	NZ\$29,370
Management	A	P		Feb or July	3 years	NZ\$29,370
Marketing	A	P		Feb or July	3 years	NZ\$29,370
Organisational Technology Management	A	P		Feb or July	3 years	NZ\$29,370
Property	A	P		Feb or July	3 years	NZ\$29,370
Strategic Communication	A	P		Feb or July	3 years	NZ\$29,370
<b>Bachelor of Commercial Music</b>						
Music Industry			W	Feb	3 years	NZ\$32,650
Music Technology (including Sound Engineering)			W	Feb	3 years	NZ\$32,650
Music Practice			W	Feb	3 years	NZ\$32,650
<b>Bachelor of Communication</b>						
Communication Management	A	P	W	A, P: Feb or July W: Feb	3 years	NZ\$29,370
Expressive Arts	A	P	W	Feb or July	3 years	NZ\$32,650
Journalism			W	Feb	3 years	NZ\$29,370
Linguistics	A	P	W	Feb or July	3 years	NZ\$26,530
Digital Marketing	A	P	W	Feb	3 years	NZ\$29,370
Media Studies	A	P	W	Feb or July	3 years	NZ\$26,530
Public Relations	A	P	W	A: Feb or July P, W: Feb	3 years	NZ\$29,370
<b>Bachelor of Construction</b>						
Construction Management	A			Feb	3 years	NZ\$35,330
Quantity Surveying	A			Feb	3 years	NZ\$35,330
<b>Bachelor of Creative Media Production</b>				Feb <sup>#</sup> or July <sup>*</sup>	3 yrs <sup>#</sup> /2.5 yrs <sup>*</sup>	NZ\$35,330
Pathway in:						
· Animation and VFX			W			
· Creative Technologies			W			
· Film and Television			W			
· Game Development			W			
· Producing and Directing			W			
<sup>#</sup> 3 years if starting in February; <sup>*</sup> 2.5 years if starting in July.						
<b>Bachelor of Design with Honours</b>						
Concept Design			W	Feb <sup>#</sup> or July <sup>*</sup>	4 yrs <sup>#</sup> /3.5 yrs <sup>*</sup>	NZ\$32,650
Fashion Design			W	Feb <sup>#</sup> or July <sup>*</sup>	4 yrs <sup>#</sup> /3.5 yrs <sup>*</sup>	NZ\$32,650
Industrial Design			W	Feb <sup>#</sup> or July <sup>*</sup>	4 yrs <sup>#</sup> /3.5 yrs <sup>*</sup>	NZ\$32,650
Integrated Design			W	Feb <sup>#</sup> or July <sup>*</sup>	4 yrs <sup>#</sup> /3.5 yrs <sup>*</sup>	NZ\$32,650
Photography			W	Feb <sup>#</sup> or July <sup>*</sup>	4 yrs <sup>#</sup> /3.5 yrs <sup>*</sup>	NZ\$32,650
Spatial Design			W	Feb <sup>#</sup> or July <sup>*</sup>	4 yrs <sup>#</sup> /3.5 yrs <sup>*</sup>	NZ\$32,650
Textile Design			W	Feb <sup>#</sup> or July <sup>*</sup>	4 yrs <sup>#</sup> /3.5 yrs <sup>*</sup>	NZ\$32,650
Visual Communication Design			W	Feb <sup>#</sup> or July <sup>*</sup>	4 yrs <sup>#</sup> /3.5 yrs <sup>*</sup>	NZ\$32,650
<sup>#</sup> 4 years if starting in February; <sup>*</sup> 3.5 years if starting in July.						
<b>Bachelor of Engineering with Honours</b>						
Chemical and Bioprocess Engineering Available in Auckland for Year 1 and 2. Years 3 and 4 available in Palmerston North only.	A	P		Feb	4 years	NZ\$35,330
Electronics and Computer Engineering	A	P		Feb	4 years	NZ\$35,730
Engineering and Innovation Management	A	P		Feb	4 years	NZ\$35,330
Mechatronics	A	P		Feb	4 years	NZ\$35,330



Programme				Start date	Duration	Cost (per 120 credits)
	Auckland	Palmerston North	Wellington			
Bachelor of Fine Arts with Honours			W	Feb <sup>#</sup> or July <sup>*</sup>	4 yrs <sup>#</sup> /3.5 yrs <sup>*</sup>	NZ\$32,650
#4 years if starting in February; *3.5 years if starting in July.						
Bachelor of Food Technology with Honours						
Food Process Engineering Available in Auckland for Year 1 and 2. Also Semester 1, Year 3. Subsequent semesters available in Palmerston North only.	A	P		Feb	4 years	NZ\$35,330
Food Product Technology	A	P		Feb	4 years	NZ\$35,330
Bachelor of Horticultural Science		P		Feb or July	3 years	NZ\$32,780
Bachelor of Information Sciences						
Computer Science	A	P		A: Feb or July P: Feb or July <sup>*</sup>	3 years	NZ\$32,780
Data Science	A			Feb or July <sup>*</sup>	3 years	NZ\$31,780
Information Systems	A	P		Feb or July	3 years	NZ\$31,780
Information Technology	A	P		A: Feb or July P: Feb or July <sup>*</sup>	3 years	NZ\$35,330
Software Engineering	A	P		A: Feb or July P: Feb or July <sup>*</sup>	3 years	NZ\$35,330
*July start will take 3.5 years to complete						
Bachelor of Māori Visual Arts		P		Feb	4 years	NZ\$32,650
Bachelor of Nursing	A	P	W	Feb	3 years	NZ\$32,780
Bachelor of Resource and Environmental Planning		P		Feb or July	4 years	NZ\$35,330
Bachelor of Retail and Business Management	A			Feb	3 years	NZ\$29,370
Bachelor of Science						
Chemistry	A	P		Feb or July <sup>1</sup>	3 years	NZ\$32,780
Computer Science	A	P		Feb or July <sup>1</sup>	3 years	NZ\$32,780
Data Science	A			Feb or July <sup>1</sup>	3 years	NZ\$31,780
Earth Science		P		Feb or July <sup>1</sup>	3 years	NZ\$32,780
Ecology		P		Feb or July <sup>1</sup>	3 years	NZ\$32,780
Ecology and Sustainability	A			Feb or July <sup>1</sup>	3 years	NZ\$32,780
Environmental Science		P		Feb or July <sup>1</sup>	3 years	NZ\$32,780
Exercise and Sport Science	A			Feb or July <sup>1</sup>	3 years	NZ\$32,780
Human Nutrition	A	P		Feb or July <sup>1</sup>	3 years	NZ\$32,780
Integrative Biology	A			Feb or July <sup>1</sup>	3 years	NZ\$32,780
International Agriculture		P		Feb or July <sup>1</sup>	3 years	NZ\$32,780
Marine Biology	A			Feb or July <sup>1</sup>	3 years	NZ\$32,780
Mathematics	A	P		Feb or July <sup>1</sup>	3 years	NZ\$26,530
Microbiology		P		Feb or July <sup>1</sup>	3 years	NZ\$32,780
Molecular and Cellular Biology	A			Feb or July <sup>1</sup>	3 years	NZ\$32,780
Molecular Genetics and Biochemistry		P		Feb or July <sup>1</sup>	3 years	NZ\$32,780
Physics		P		Feb or July <sup>1</sup>	3 years	NZ\$32,780
Physiology	A	P		Feb or July	3 years <sup>1</sup>	NZ\$32,780
Plant Science		P		Feb or July <sup>1</sup>	3 years	NZ\$32,780
Psychology	A	P		Feb or July <sup>1</sup>	3 years	NZ\$32,780
Statistics		P		Feb or July <sup>1</sup>	3 years	NZ\$26,530
Zoology	A	P		Feb or July <sup>1</sup>	3 years	NZ\$32,780
<sup>1</sup> July start will take 3.5 years to complete						
Bachelor of Social Work	A	P		Feb or July	4 years	NZ\$26,530
Bachelor of Speech and Language Therapy with Honours	A			Feb	4 years	NZ\$35,330
Bachelor of Sport and Exercise						
Exercise Prescription		P		Feb or July	3 years	NZ\$32,780
Physical Education		P		Feb or July	3 years	NZ\$32,780

Programme	Auckland	Palmerston North	Wellington	Start date	Duration	Cost (per 120 credits)
Bachelor of Sport Management	A			Feb	3 years	NZ\$29,370
Bachelor of Veterinary Science		P			5 years	
Pre-selection	A	P		Feb	1 semester	NZ\$16,390
Professional Phase		P		July	4.5 years	NZ\$65,960
Bachelor of Veterinary Technology		P			3 years	NZ\$32,780
Pre-selection	A	P		Feb	1 semester	NZ\$16,390
Professional Phase		P		July	2.5 years	NZ\$32,780

## GRADUATE CERTIFICATES AND DIPLOMAS

Tuition fees quoted are based on 120 credits of study within the programmes, unless stated otherwise. Each 15 credit course requires approximately 10-12.5 hours each week of class and study time.

Programme	Auckland	Palmerston North	Wellington	Start date	Duration	Cost (per 120 credits)
Graduate Certificate in Science and Technology	A	P		Feb or July	1 semester	NZ\$16,390 per semester
Graduate Diploma in Applied Statistics		P		Feb or July	1 year	NZ\$29,370
Graduate Diploma in Arts						
Classical Studies	A	P		Feb or July	1 year	NZ\$26,530
Creative Writing	A	P		Feb or July	1 year	NZ\$32,650
Economics	A	P		Feb or July	1 year	NZ\$26,530
Education		P		Feb or July	1 year	NZ\$26,530
English	A	P		Feb or July	1 year	NZ\$26,530
Environmental Studies		P		Feb or July	1 year	NZ\$32,780
Geography		P		Feb or July	1 year	NZ\$32,780
History	A	P		Feb or July	1 year	NZ\$26,530
Mathematics	A	P		Feb or July	1 year	NZ\$26,530
Media Studies	A	P	W	Feb or July	1 year	NZ\$26,530
Philosophy	A	P		Feb or July	1 year	NZ\$26,530
Politics	A	P		Feb or July	1 year	NZ\$26,530
Psychology	A	P		Feb or July	1 year	NZ\$32,780
Social Anthropology	A	P		Feb or July	1 year	NZ\$26,530
Social Policy	A			Feb or July	1 year	NZ\$26,530
Sociology	A	P		Feb or July	1 year	NZ\$26,530
Graduate Diploma in Aviation						
Aviation Studies		P		July	1 year	NZ\$29,370
Graduate Diploma in Business Studies	A	P		Feb or July	1 year	NZ\$29,370
Graduate Diploma in Design						
Fashion Design			W	Feb	1 year	NZ\$32,650
Industrial Design			W	Feb	1 year	NZ\$32,650
Photography			W	Feb	1 year	NZ\$32,650
Spatial Design			W	Feb	1 year	NZ\$32,650
Textile Design			W	Feb	1 year	NZ\$32,650
Visual Communication Design			W	Feb	1 year	NZ\$32,650
Graduate Diploma in Fine Arts			W	Feb	1 year	NZ\$32,650
Graduate Diploma in Information Sciences	A	P		Feb or July	1 year	NZ\$31,780
Graduate Diploma in Journalism			W	Feb	1 year	NZ\$29,240



Programme	Auckland	Palmerston North	Wellington	Start date	Duration	Cost (per 120 credits)
Graduate Diploma in Logistics and Supply Chain Management	A			Feb	1 year	NZ\$29,370
Graduate Diploma in Science and Technology (A pathway programme to Postgraduate study in Sciences)	A	P		Feb or July	1 year	NZ\$35,330
Graduate Diploma in Teaching (Primary)	A	P		Jan	1 year (165 credits)	NZ\$36,480
Graduate Diploma in Teaching (Secondary)		P		Jan	1 year	NZ\$26,530

## POSTGRADUATE CERTIFICATES AND DIPLOMAS

Tuition fees quoted are based on 120 credits of study within the programmes, unless stated otherwise. Each 15 credit course requires approximately 10-12.5 hours each week of class and study time.

Programme	Auckland	Palmerston North	Wellington	Start date	Duration	Cost (per 120 credits)
Postgraduate Certificate in Arts	A	P		Feb or July	1 semester	NZ\$15,360 per semester
Postgraduate Certificate in Business *Limited course selection: mainly Communication	A	P	W*	Feb or July	1 semester	NZ\$15,360 per semester
Postgraduate Certificate in Emergency Management			W	Feb or July	1 semester	NZ\$17,670
Postgraduate Certificate in International Development		P		Feb or July	1 semester	NZ\$15,050 per semester
Postgraduate Certificate in Science and Technology	A	P		Feb or July	1 semester	NZ\$15,360-19,830 per semester
Postgraduate Diploma in Accountancy	A			Feb	1 year	NZ\$30,730
Postgraduate Diploma in Agribusiness		P		Feb or July	1 year	NZ\$36,120
Postgraduate Diploma in Applied Linguistics		P		Feb or July	1 year	NZ\$30,100
Postgraduate Diploma in Arts						
Economics	A	P		Feb or July	1 year	NZ\$30,730
Geography		P		Feb or July	1 year	NZ\$36,120
Politics		P		Feb or July	1 year	NZ\$30,100
Psychology	A	P		Feb or July	1 year	NZ\$36,120
Social Anthropology	A	P		Feb or July	1 year	NZ\$30,100
Sociology	A	P		Feb or July	1 year	NZ\$30,100
Postgraduate Diploma in Business *Limited course selection: mainly Communication	A	P	W*	Feb or July	1 year	NZ\$30,730
Postgraduate Diploma in Construction						
Building Technology	A			Feb	1 year	NZ\$38,910
Construction Law	A			Feb	1 year	NZ\$35,730
Construction Project Management	A			Feb	1 year	NZ\$38,910
Facilities Management	A			Feb	1 year	NZ\$38,910
Quantity Surveying	A			Feb or July	1 year	NZ\$35,730
Without major	A			Feb or July	1 year	NZ\$38,910
Postgraduate Diploma in Design						
Fashion Design			W	Feb	1 year	NZ\$35,730
Industrial Design			W	Feb	1 year	NZ\$35,730
Photography			W	Feb	1 year	NZ\$35,730
Spatial Design			W	Feb	1 year	NZ\$35,730
Textile Design			W	Feb	1 year	NZ\$35,730
Visual Communication Design			W	Feb	1 year	NZ\$35,730
Postgraduate Diploma in Education						
Teaching and Learning		P		Feb or July	1 year	NZ\$29,450
Unendorsed		P		Feb or July	1 year	NZ\$30,100
Postgraduate Diploma in Emergency Management			W	Feb or July	1 year	NZ\$35,330

Programme				Start date	Duration	Cost (per 120 credits)
	Auckland	Palmerston North	Wellington			
Postgraduate Diploma in Environmental Management		P		Feb or July	1 year	NZ\$39,670
Postgraduate Diploma in Fine Arts			W	Feb	1 year	NZ\$35,730
Postgraduate Diploma in Information Sciences	A			Feb or July	1 year	NZ\$35,730
Postgraduate Diploma in International Development		P		Feb or July	1 year	NZ\$30,100
Postgraduate Diploma in Journalism			W	Feb	1 year	NZ\$30,100 <sup>4</sup>
<sup>4</sup> Programme has a component fee of NZ\$3189.90						
Postgraduate Diploma in Logistics and Supply Chain Management	A			Feb or July	1 year	NZ\$30,730
Postgraduate Diploma in Māori Visual Arts		P		Feb	1 year	NZ\$35,730
Postgraduate Diploma in Science and Technology						
Agricultural Science		P		Feb or July	1 year	NZ\$39,670
Animal Science		P		Feb or July	1 year	NZ\$39,670
Biochemistry	A	P		Feb or July	1 year	NZ\$36,120
Biological Sciences	A	P		Feb or July	1 year	NZ\$36,120
Chemistry	A	P		Feb	1 year	NZ\$36,120
Conservation Biology	A	P		Feb	1 year	NZ\$36,120
Earth Science		P		Feb	1 year	NZ\$36,120
Ecology		P		Feb	1 year	NZ\$36,120
Genetics	A	P		Feb	1 year	NZ\$36,120
Geography		P		Feb	1 year	NZ\$36,120
Horticultural Science		P		Feb, July or Nov	1 year	NZ\$39,670
Human Nutrition	A	P		Feb or July	1 year	NZ\$36,120
Mathematics	A	P		A: Feb P: Feb or July	1 year	NZ\$30,730
Microbiology		P		Feb	1 year	NZ\$36,120
Nanoscience		P		Feb	1 year	NZ\$36,120
Physics		P		Feb	1 year	NZ\$36,120
Physiology		P		Feb	1 year	NZ\$36,120
Plant Biology		P		Feb	1 year	NZ\$39,670
Plant Breeding		P		Feb	1 year	NZ\$39,670
Psychology	A <sup>^</sup>	P		Feb or July	1 year	NZ\$36,120
Soil Science		P		Feb	1 year	NZ\$39,670
Statistics		P		Feb or July	1 year	NZ\$30,730
Zoology		P		Feb	1 year	NZ\$36,120
<sup>^</sup> May require travel to a block course at another campus						
Postgraduate Diploma in Sport Management	A			Feb or July	1 year	NZ\$30,730
Postgraduate Diploma in Veterinary Science						
Veterinary Public Health		P		Feb	1 year	NZ\$46,670
Veterinary Epidemiology		P		Feb	1 year	NZ\$46,670



## MASTER'S DEGREES

Coursework master's (C) is generally a 180 credit programme completed in either 1 year (three consecutive semesters) or 1.5 years.

A research master's (R) is generally a 240 credit programme (2 years), however some are 180 credit programmes (1.5 years). Tuition fees quoted are based on 120 credits of study within the programmes, unless stated otherwise. Each 15 credit course requires approximately 10-12.5 hours each week of class and study time.

Programme				Start date	Duration	Cost (per 120 credits)
	Auckland	Palmerston North	Wellington			
Master of Agribusiness (C or R)		P		Feb or July	1.5 years	NZ\$39,670
Master of Agriculture (C)						
Agriculture		P		Feb or July	1.5 years	NZ\$39,670
Equine		P		Feb	1.5 years	NZ\$39,670
Horticulture		P		Feb or July	1.5 years	NZ\$39,670
Life Cycle Management		P		Feb	1.5 years	NZ\$39,670
Without specialisation		P		Feb or July	1.5 years	NZ\$39,670
Master of Analytics (C)						
Business	A		W	Feb to Feb	1 year	NZ\$30,730*
Public Policy			W	Feb to Feb	1 year	NZ\$30,730*
* Please note that this programme is 180 credits over a year (3 consecutive semesters). The price stated above is for 120 credits so you need to factor in the additional 60 credits.						
Master of Applied Linguistics (C)						
Teaching English to Speakers of Other Languages		P		Feb	1.5 years	NZ\$30,100
Unendorsed		P		Feb	1.5 years	NZ\$30,100
Master of Applied Social Work (C)	A			Feb	2 years	NZ\$30,100
Master of Applied Statistics (C)		P		Feb or July	1.5 years	NZ\$30,100
Master of Aviation (C)		P		Feb or July	1.5 years	NZ\$30,730
Master of Arts						
Economics	A	P		Feb or July	1.5 years	NZ\$30,730
Geography		P		Feb or July	1.5 years	NZ\$36,120
Politics		P		Feb or July	1.5 years	NZ\$30,100
Psychology	A	P		Feb or July	1.5 years	NZ\$36,120
Social Anthropology	A	P		Feb or July	1.5 years	NZ\$30,100
Sociology	A	P		Feb or July	1.5 years	NZ\$30,100
Master of Business Administration	A			Feb, July, or Oct	1 year	NZ\$48,920*
* Please note that this programme is 180 credits over a year (3 consecutive semesters). The price stated above is for 180 credits.						
Master of Business Studies (R)						
Accountancy	A			Feb or July	1.5 years	NZ\$30,730
Economics	A	P		A: Feb or July P: Feb	1.5 years	NZ\$30,730
Finance	A	P		Feb or July	1.5 years	NZ\$30,730
Human Resource Management	A	P		Feb	1.5 years	NZ\$30,730
Management	A	P		Feb	1.5 years	NZ\$30,730
Marketing	A			Feb	1.5 years	NZ\$30,730
Master of Construction (C)						
Building Technology	A			Feb	1 year	NZ\$38,910
Construction Law	A			Feb	1 year	NZ\$35,730
Construction Project Management	A			Feb	1 year	NZ\$38,910
Facilities Management	A			Feb	1 year	NZ\$38,910
Quantity Surveying	A			Feb	1 year	NZ\$35,730
Without specialisation (R)	A			Feb or July	1 year	NZ\$38,910

Programme				Start date	Duration	Cost (per 120 credits)
	Auckland	Palmerston North	Wellington			
Master of Creative Enterprise			W	Feb	1.5 years	NZ\$35,730
Master of Design			W	Feb, July or Sep	1-1.5 years	NZ\$35,730
Master of Education (C or R)						
Teaching and Learning		P		Feb	(C) 1.5 years (R) 2 years	NZ\$29,450
Unendorsed		P		Feb	(C) 1.5 years (R) 2 years	NZ\$30,100
Master of Emergency Management			W	Feb	1.5 years	NZ\$35,330
Master of Engineering (R)	A	P		Feb or July	1 year	NZ\$38,910
Master of Engineering Studies (C)						
Electronics and Computer Engineering	A	P		Feb or July	1 year	NZ\$35,730
Mechatronics	A	P		Feb or July	1 year	NZ\$38,910
Packaging Technology		P		Feb or July	1 year	NZ\$38,910
Renewable Energy Systems		P		Feb	1 year	NZ\$38,910
Master of Environmental Management (C)		P		Feb or July	1.5 years	NZ\$39,670
Master of Finance (R)	A	P		Feb or July	1.5 years	NZ\$30,730
Master of Fine Arts						
Design			W	Feb	2 years	NZ\$35,730
Fine Arts			W	Feb	2 years	NZ\$35,730
Unendorsed			W	Feb	2 years	NZ\$35,730
Master of Food Safety and Quality (C)		P		Feb or July	1.5 years	NZ\$38,910
Master of Food Technology (R)	A	P		Feb	1.5 years	NZ\$38,910
Master of Information Sciences (C and R)						
Computer Science	A			Feb or July	1.5 years	NZ\$35,730
Information Technology	A			Feb or July	1.5 years	NZ\$35,730
Software Engineering	A			Feb or July	1.5 years	NZ\$35,730
Without Specialisation	A			Feb or July	1.5 years	NZ\$35,730
Master of International Development (C and R)		P		Feb or July	1.5 years	NZ\$30,100
Master of Management (C)						
Agribusiness		P		Feb	1.5 years	NZ\$30,730
Banking and Finance	A	P		Feb	1.5 years	NZ\$30,730
Communication			W	July	1.5 years	NZ\$30,730
Financial Economics	A			Feb or July	1.5 years	NZ\$30,730
Human Resource Management	A	P		A: Feb or July P: Feb	1.5 years	NZ\$30,730
International Business	A			Feb	1.5 years	NZ\$30,730
Management	A	P		A: Feb or July P: Feb	1.5 years	NZ\$30,730
Marketing	A	P		A: Feb or July P: Feb	1.5 years	NZ\$30,730
Master of Māori Visual Arts		P		Feb	2 years	NZ\$35,730
Master of Professional Accountancy and Finance (C)	A	P		Feb or Jul	2 years	NZ\$30,730
Master of Science (C and R)						
Agricultural Science		P		Feb or July	1.5 or 2 years	NZ\$39,670
Animal Science		P		Feb or July	1.5 or 2 years	NZ\$39,670
Biochemistry	A	P		Feb or July	1.5 or 2 years	NZ\$36,120
Biological Sciences	A	P		Feb or July	1.5 or 2 years	NZ\$36,120
Chemistry	A	P		A: Feb or July P: Feb	1.5 or 2 years	NZ\$36,120
Computer Science	A			Feb or July	1.5 or 2 years	NZ\$35,730
Conservation Biology	A	P		A: Feb or July P: Feb	1.5 or 2 years	NZ\$36,120
Earth Science		P		Feb	1.5 or 2 years	NZ\$36,120
Ecology		P		Feb	1.5 or 2 years	NZ\$36,120



Programme	Auckland	Palmerston North	Wellington	Start date	Duration	Cost (per 120 credits)
Genetics	A	P		Feb or July	1.5 or 2 years	NZ\$36,120
Geography		P		Feb	1.5 or 2 years	NZ\$36,120
Horticultural Science		P		Feb	1.5 or 2 years	NZ\$39,670
Human Nutrition	A	P		Feb	2 years	NZ\$36,120
Mathematics	A	P		Feb or July	1.5 or 2 years	NZ\$30,730
Microbiology		P		Feb	1.5 or 2 years	NZ\$36,120
Nanoscience		P		Feb	1.5 or 2 years	NZ\$36,120
Physics		P		Feb	1.5 or 2 years	NZ\$36,120
Physiology		P		Feb	1.5 or 2 years	NZ\$36,120
Plant Biology		P		Feb	1.5 or 2 years	NZ\$39,670
Plant Breeding		P		Feb	1.5 or 2 years	NZ\$36,120
Psychology	A ^	P		Feb or July	2 years	NZ\$36,120
Soil Science		P		Feb	1.5 or 2 years	NZ\$36,120
Statistics		P		Feb or July	1.5 or 2 years	NZ\$30,730
Zoology		P		Feb	1.5 or 2 years	NZ\$36,120
^May require travel to a block course at another campus. Note: The Master of Science is available as Coursework (C) 1.5 years or Research (R) 2 years.						
Master of Speech and Language Therapy (R)	A			Feb	2 years	NZ\$38,910
Master of Supply Chain Management (C)	A			Feb	1.5 years	NZ\$30,730
Master of Supply Chain Management (R) (^July start available in some circumstances)	A			Feb or July^	1 year	NZ\$30,730
Master of Sustainable Development Goals (C) (subject to CUAP approval)						
Environmental Sustainability		P		Feb or July	1.5 years	NZ\$36,120
Global Development		P		Feb	1.5 years	NZ\$32,300
Master of Veterinary Science (R)		P		Feb	2 years	NZ\$46,670
Master of Veterinary Studies (C) or (R)						NZ\$46,670
Conservation Veterinary Medicine		P		Feb	1.5 years	NZ\$46,670
Epidemiology		P		Feb	1.5 years	NZ\$46,670
Veterinary Public Health		P		Feb	1.5 years	NZ\$46,670
Unendorsed		P		Feb	1.5 years	NZ\$46,670

## DOCTORAL DEGREES

Programme	Auckland	Palmerston North	Wellington	Start date	Duration	Cost (per 120 credits)
Doctor of Philosophy (PhD)	A	P	W	Any time	3-4 years	NZ\$6,480-8,002 <sup>1</sup>

<sup>1</sup>The New Zealand Government has approved a policy for new international student PhD applicants which offers international students the same level of tuition fees as those paid by New Zealand domestic students. At Massey University, this policy relates to the Doctor of Philosophy with research topics in all areas including: Business, Creative Arts, Health, Humanities and Social Sciences, and Sciences. For specific details, please refer to [www.massey.ac.nz/prospective-phd/](http://www.massey.ac.nz/prospective-phd/)

# STUDY ONLINE FROM YOUR COUNTRY



Massey University is a leader in online and borderless education. We have been providing distance education for almost 60 years and more than 350,000 people from all over the world have studied via distance with us.

We are ranked in the top 300 universities in the world and have five stars across nine categories (including Online) by QS World University Rankings. You can be confident your learning will be at the latest international standards and your qualification will be well received wherever your journey takes you after you graduate.

## WHY STUDY ONLINE WITH MASSEY UNIVERSITY

With Massey University, you can study fully online - you don't need to travel to New Zealand. The qualifications you obtain by studying online with Massey University are the same as you would receive if studying at one of our three campuses in New Zealand.

Studying online allows you to achieve your educational dreams while you are working, training or raising a family. Our online programmes have been designed to fit around you – watch lectures or read materials wherever you might be, at a time that is suitable to your schedule. There are some great benefits to online learning including meeting the commitments you have at home and work, saving time and money.

It is important to note that Immigration New Zealand will not grant a student visa for study in New Zealand where the intended programme of study is wholly delivered by online mode. If you hold a work permit you can study part-time via online learning. Please contact us for more information.

## OUR ONLINE PROGRAMMES ARE DESIGNED WITH YOU IN MIND

- > Your online lectures are given by the same academic staff who teach on campus
- > Online tools allow you to study when you can and still be in contact with your lecturer when you need to, and
- > Our support services are here to help you attain your educational dream.

All students studying online have access to Stream – Massey's virtual learning community. It's a place where you can exchange ideas with fellow students and lecturers.

Depending on the course you are studying, Stream offers:

- > Latest news on your subject
- > Study notes
- > Recent articles
- > Online presentations
- > Activities
- > Assignments
- > Quizzes
- > Tests
- > Online conversations and discussion forums

## HELPFUL SUPPORT

The key to studying online is having strategies and support people in place to help with challenges that may arise. With Massey University you are not studying alone! Our team have created a support service for our students living around the world. We're here to help you when you need advice.

## FEES

International students studying outside of New Zealand do not need to pay New Zealand Goods and Services Tax (GST).

View all our online programmes at [massey.ac.nz/borderless](https://massey.ac.nz/borderless)





# 2020 ONLINE PROGRAMMES AVAILABLE TO INTERNATIONAL STUDENTS

This is a guide to programmes available to international students interested in studying online from **outside New Zealand**. Tuition fees quoted are estimates only, are in New Zealand dollars and exclude GST, and are based on 2020 fees.

**Tuition fees quoted are based on 120 credits, as well as per 15 credit course (paper) of study within the programmes unless stated otherwise. Students who study online enjoy 15% lower fees than students who study on campus due to not having to pay GST.**

**Each 15 credit course requires approximately 10-12.5 hours each week of class and study time.** You can search the Massey University website: [massey.ac.nz](https://massey.ac.nz) for full programme details. If you are ready to apply, please visit [massey.ac.nz/international](https://massey.ac.nz/international)

Online courses need to be chosen very carefully to ensure they do not require the student to travel to New Zealand for onshore contact. There are sufficient courses to complete the qualification that do not require onshore contact.

## CERTIFICATES AND DIPLOMAS

Online Programme	Start date	Duration (if studied full-time)	Online cost	Per 15 credit course
Certificate in Arts	Feb or July	1 semester	NZ\$11,530 per semester	NZ\$2880
Certificate in Aviation Studies	Feb	1 semester	NZ\$12,770 per semester	NZ\$3190
Certificate in Science and Technology	Feb, July or Nov	1 semester	NZ\$14,250 per semester	NZ\$3560
Diploma in Arts	Feb or July	1 year	NZ\$23,070-\$28,500	NZ\$3560
Diploma in Business Studies	Feb or July	1 year	NZ\$25,540	NZ\$3190
Diploma in Communication	Feb or July	1 year	NZ\$23,070	NZ\$2880
Diploma in Science and Technology	Feb, July or Nov	1 year	NZ\$28,500	NZ\$3560

## BACHELOR'S DEGREES

Online Programme	Start date	Duration (if studied full-time)	Online cost (per 120 credits)	Per 15 credit course
Bachelor of Accountancy	Feb or July	3 years	NZ\$25,540	NZ\$3190
Bachelor of Applied Economics	Feb or July	3 years	NZ\$25,540	NZ\$3190
Bachelor of Arts				
Chinese	Feb or July	3 years	NZ\$23,070	NZ\$2880
Classical Studies	Feb or July	3 years	NZ\$23,070	NZ\$2880
Creative Writing	Feb or July	3 years	NZ\$23,070	NZ\$2880
Defence Studies	Feb or July	3 years	NZ\$23,070	NZ\$2880
Economics	Feb or July	3 years	NZ\$25,540	NZ\$3190
Education	Feb or July	3 years	NZ\$23,070	NZ\$2880
Educational Psychology	Feb or July	3 years	NZ\$28,500	NZ\$3560
English	Feb or July	3 years	NZ\$23,070	NZ\$2880
History	Feb or July	3 years	NZ\$23,070	NZ\$2880
Japanese	Feb or July	3 years	NZ\$23,070	NZ\$2880
Linguistics	Feb or July	3 years	NZ\$23,070	NZ\$2880
Mathematics	Feb or July	3 years	NZ\$23,070	NZ\$2880
Media Studies	Feb or July	3 years	NZ\$23,070	NZ\$2880
Philosophy	Feb or July	3 years	NZ\$23,070	NZ\$2880
Politics	Feb or July	3 years	NZ\$23,070	NZ\$2880
Psychology	Feb or July	3 years	NZ\$28,500	NZ\$3560
Security Studies	Feb or July	3 years	NZ\$23,070	NZ\$2880
Social Anthropology	Feb or July	3 years	NZ\$23,070	NZ\$2880
Social Policy	Feb or July	3 years	NZ\$23,070	NZ\$2880

Online Programme	Start date	Duration (if studied full-time)	Online cost (per 120 credits)	Per 15 credit course
Sociology	Feb or July	3 years	NZ\$23,070	NZ\$2880
Spanish	Feb or July	3 years	NZ\$23,070	NZ\$2880
Statistics	Feb or July	3 years	NZ\$23,070	NZ\$2880
Bachelor of Aviation Management	Feb or July	3 years	NZ\$25,540	NZ\$3190
Bachelor of Business				
Accountancy	Feb or July	3 years	NZ\$25,540	NZ\$3190
Economics	Feb or July	3 years	NZ\$25,540	NZ\$3190
Finance	Feb or July	3 years	NZ\$25,540	NZ\$3190
Financial Planning and Advice	Feb or July	3 years	NZ\$25,540	NZ\$3190
Human Resource Management and Employment Relations	Feb or July	3 years	NZ\$25,540	NZ\$3190
International Business	Feb or July	3 years	NZ\$25,540	NZ\$3190
Management	Feb or July	3 years	NZ\$25,540	NZ\$3190
Marketing	Feb or July	3 years	NZ\$25,540	NZ\$3190
Organisational Technology Management	Feb or July	3 years	NZ\$25,540	NZ\$3190
Property	Feb or July	3 years	NZ\$25,540	NZ\$3190
Strategic Communication	Feb or July	3 years	NZ\$25,540	NZ\$3190
Bachelor of Communication				
Communication Management	Feb or July	3 years	NZ\$25,540	NZ\$3190
Digital Marketing	Feb or July	3 years	NZ\$25,540	NZ\$3190
Journalism	Feb	3 years	NZ\$25,540	NZ\$3190
Marketing Communication	Feb or July	3 years	NZ\$25,540	NZ\$3190
Public Relations	Feb or July	3 years	NZ\$25,540	NZ\$3190
Bachelor of Information Sciences				
Computer Science	Feb or July <sup>1</sup>	3 years	NZ\$28,500	NZ\$3560
Information Systems	Feb or July <sup>1</sup>	3 years	NZ\$30,730	NZ\$3370
Information Technology	Feb or July <sup>1</sup>	3 years	NZ\$30,730	NZ\$3370
Software Engineering	Feb or July <sup>1</sup>	3 years	NZ\$30,730	NZ\$3370
<sup>1</sup> July start will take 3.5 years to complete				
Bachelor of Retail and Business Management	Feb	3 years	NZ\$25,540	NZ\$3190
Bachelor of Science				
Computer Science	Feb or July <sup>1</sup>	3 years	NZ\$28,500	NZ\$3560
Mathematics	Feb or July <sup>1</sup>	3 years	NZ\$23,070	NZ\$2880
Psychology	Feb or July <sup>1</sup>	3 years	NZ\$28,500	NZ\$3560
Statistics	Feb or July <sup>1</sup>	3 years	NZ\$23,070	NZ\$2880
<sup>1</sup> July start will take 3.5 years to complete				
Bachelor of Sport Management	Feb	3 years	NZ\$25,540	NZ\$3190



## GRADUATE CERTIFICATES AND DIPLOMAS

Each 15 credit course requires approximately 10-12.5 hours each week of class and study time.

Online Programme	Start date	Duration (if studied full-time)	Online cost (per 120 credits)	Per 15 credit course
Graduate Certificate in Emergency Management	Feb or July	1 semester	NZ\$11,530 per semester	NZ\$2880
Graduate Certificate in Science and Technology	Feb or July	1 semester	NZ\$14,250 per semester	NZ\$3560
Graduate Diploma in Applied Statistics	Feb or July	1 year	NZ\$25,540	NZ\$3190
Graduate Diploma in Arts				
Chinese	Feb or July	1 year	NZ\$23,070	NZ\$2880
Classical Studies	Feb or July	1 year	NZ\$23,070	NZ\$2880
Defence Studies	Feb or July	1 year	NZ\$23,070	NZ\$2880
Economics	Feb or July	1 year	NZ\$25,540	NZ\$3190
Education	Feb or July	1 year	NZ\$23,070	NZ\$2880
Educational Psychology	Feb or July	1 year	NZ\$28,500	NZ\$3560
English	Feb or July	1 year	NZ\$23,070	NZ\$2880
History	Feb or July	1 year	NZ\$23,070	NZ\$2880
Japanese	Feb or July	1 year	NZ\$23,070	NZ\$2880
Linguistics	Feb or July	1 year	NZ\$23,070	NZ\$2880
Mathematics	Feb or July	1 year	NZ\$23,070	NZ\$2880
Philosophy	Feb or July	1 year	NZ\$23,070	NZ\$2880
Psychology	Feb or July	1 year	NZ\$28,500	NZ\$3560
Security Studies	Feb or July	1 year	NZ\$28,500	NZ\$3560
Social Anthropology	Feb or July	1 year	NZ\$23,070	NZ\$2880
Social Policy	Feb or July	1 year	NZ\$23,070	NZ\$2880
Sociology	Feb or July	1 year	NZ\$23,070	NZ\$2880
Spanish	Feb or July	1 year	NZ\$23,070	NZ\$2880
Statistics	Feb or July	1 year	NZ\$23,070	NZ\$2880
Graduate Diploma in Aviation				
Aviation Studies	Feb or July	1 year	NZ\$30,370	NZ\$3840
Graduate Diploma in Business Studies				
Accounting	Feb or July	1 year	NZ\$25,540	NZ\$3190
Human Resource Management	Feb or July	1 year	NZ\$25,540	NZ\$3190
Personal Financial Planning	Feb or July	1 year	NZ\$25,540	NZ\$3190
Graduate Diploma in Emergency Management	Feb or July	1 year	NZ\$27,190	NZ\$3390
Graduate Diploma in Information Sciences	Feb or July	1 year	NZ\$27,640	NZ\$3560
Graduate Diploma in Journalism Studies	Feb	1 year	NZ\$25,540	NZ\$3190

## POSTGRADUATE CERTIFICATES AND DIPLOMAS

Each 15 credit course requires approximately 10-12.5 hours each week of class and study time.

Online Programme	Start date	Duration (if studied full-time)	Online cost (per 120 credits)	Per 15 credit course
Postgraduate Certificate in Business	Feb or July	1 semester	NZ\$13,170 per semester	NZ\$3340
Postgraduate Certificate in International Development	Feb or July	1 semester	NZ\$13,090 per semester	NZ\$3270
Postgraduate Certificate in Planning	Feb or July	1 semester	NZ\$16,910 per semester	NZ\$4220
Postgraduate Diploma in Accountancy	Feb or July	1 year	NZ\$26,720	NZ\$3340
Postgraduate Diploma in Applied Linguistics	Feb or July	1 year	NZ\$26,170	NZ\$3270

Online Programme	Start date	Duration (if studied full-time)	Online cost (per 120 credits)	Per 15 credit course
Postgraduate Diploma in Arts				
Geospatial Science	Feb or July	1 year	NZ\$26,170	NZ\$3270
Politics	Feb or July	1 year	NZ\$26,170	NZ\$3270
Social Anthropology	Feb or July	1 year	NZ\$26,170	NZ\$3270
Sociology	Feb or July	1 year	NZ\$26,170	NZ\$3270
Postgraduate Diploma in Business				
	Feb or July	1 year	NZ\$26,720	NZ\$3340
Postgraduate Diploma in Education				
Counselling and Guidance	Feb or July	1 year	NZ\$25,610	NZ\$3200
Digital Education	Feb or July	1 year	NZ\$25,610	NZ\$3200
Early Years	Feb or July	1 year	NZ\$25,610	NZ\$3200
Educational Administration and Leadership	Feb or July	1 year	NZ\$25,610	NZ\$3200
Literacy Education	Feb or July	1 year	NZ\$25,610	NZ\$3200
Mathematics Education	Feb or July	1 year	NZ\$25,610	NZ\$3200
Teaching and Learning	Feb or July	1 year	NZ\$25,610	NZ\$3200
Tertiary Education	Feb or July	1 year	NZ\$25,610	NZ\$3200
Unendorsed	Feb or July	1 year	NZ\$26,170	NZ\$3270
Postgraduate Diploma in Environmental Management				
	Feb or July	1 year	NZ\$34,500	NZ\$4220
Postgraduate Diploma in Emergency Management				
	Feb or July	1 year	NZ\$31,410	NZ\$3920
Postgraduate Diploma in Health Service Management				
	Feb	1 year	NZ\$26,720	NZ\$3340
Postgraduate Diploma in International Development				
	Feb or July	1 year	NZ\$26,170	NZ\$3270
Postgraduate Diploma in Management				
Statistics	Feb or July	1 year	NZ\$26,720	NZ\$3340
Postgraduate Diploma in Planning				
	Feb or July	1 year	NZ\$33,830	NZ\$4220
Postgraduate Diploma in Quality Systems				
	Feb	1 year	NZ\$33,830	NZ\$4220
Postgraduate Diploma in Science and Technology				
Statistics	Feb or July	1 year	NZ\$26,720	NZ\$3340
Postgraduate Diploma in Speech and Language Therapy				
	Feb	1 year	NZ\$33,830	NZ\$4220
Postgraduate Diploma in Veterinary Science				
Veterinary Medicine	Feb or July*	1 year	NZ\$40,590	NZ\$4420

\*July will take 3 semesters

## MASTER'S DEGREES

Coursework master's (C) is generally a 180 credit programme completed in either 1 year (three consecutive semesters) or 1.5 years.

A research master's (R) is generally a 240 credit programme (2 years), however some are 180 credit programmes (1.5 years). Each 15 credit course requires approximately 10-12.5 hours each week of class and study time.

Online Programme	Start date	Duration (if studied full-time)	Online cost (per 120 credits)	Per 15 credit course
Master of Applied Linguistics (C)				
Teaching English to Speakers of Other Languages	Feb or July	1.5 years	NZ\$26,170	NZ\$3270
Unendorsed	Feb or July	1.5 years	NZ\$26,170	NZ\$3270
Master of Aviation (C)				
	Feb or July	1.5 years	NZ\$26,720	NZ\$3340
Master of Arts				
Defence and Security Studies	Feb or July	1.5 years	NZ\$26,170	NZ\$3270
English	Feb or July	1.5 years	NZ\$26,170	NZ\$3270
Geography	Feb or July	1.5 years	NZ\$31,410	NZ\$3920
Media Studies	Feb or July	1.5 years	NZ\$26,720	NZ\$3340
Politics	Feb or July	1.5 years	NZ\$26,170	NZ\$3270
Philosophy	Feb or July	1.5 years	NZ\$26,170	NZ\$3270
Social Anthropology	Feb or July	1.5 years	NZ\$26,170	NZ\$3270
Sociology	Feb or July	1.5 years	NZ\$26,170	NZ\$3270



Online Programme	Start date	Duration (if studied full-time)	Online cost (per 120 credits)	Per 15 credit course
Spanish	Feb or July	1.5 years	NZ\$26,170	NZ\$3270
Master of Business Administration	Nov or March	2 years part-time	NZ\$42,130	
Master of Business Studies (R)				
Communication	Feb	1.5 years	NZ\$26,720	NZ\$3340
Finance	Feb	1.5 years	NZ\$26,720	NZ\$3340
Human Resource Management	Feb	1.5 years	NZ\$26,720	NZ\$3340
Management	Feb	1.5 years	NZ\$26,720	NZ\$3340
Marketing	Feb	1.5 years	NZ\$26,720	NZ\$3340
Master of Communication (C)	Feb	1.5 years	NZ\$26,720	NZ\$3340
Master of Education (C or R)				
Digital Education	Feb	(C) 1.5 years (R) 2 years	NZ\$25,610	NZ\$3200
Early Years	Feb	(C) 1.5 years (R) 2 years	NZ\$25,610	NZ\$3200
Educational Administration and Leadership	Feb	(C) 1.5 years (R) 2 years	NZ\$25,610	NZ\$3200
Literacy Education	Feb	(C) 1.5 years (R) 2 years	NZ\$25,610	NZ\$3200
Mathematics Education	Feb	(C) 1.5 years (R) 2 years	NZ\$25,610	NZ\$3200
Teaching and Learning	Feb or July	(C) 1.5 years (R) 2 years	NZ\$25,610	NZ\$3200
Tertiary Education	Feb or July	(C) 1.5 years (R) 2 years	NZ\$25,610	NZ\$3200
Unendorsed	Feb or July	(C) 1.5 years (R) 2 years	NZ\$26,170	NZ\$3270
Master of Environmental Management (C)	Feb or July	1.5 years	NZ\$34,500	NZ\$4220
Master of Food Safety and Quality (C)	Feb	1.5 years	NZ\$36,920	NZ\$4610
Master of Health Service Management	Feb or July	1.5 years	NZ\$26,720	NZ\$3340
Master of International Security (C)	Feb or July	1.5 years	NZ\$26,170	NZ\$3270
Master of Management				
Communication	Feb or July	1 year	NZ\$26,720	NZ\$3340
Health Service Management	Feb	1 year	NZ\$26,720	NZ\$3340
Human Resource Management	Feb or July	1 year	NZ\$26,720	NZ\$3340
International Business	Feb or July	1 year	NZ\$26,720	NZ\$3340
Management	Feb or July	1 year	NZ\$26,720	NZ\$3340
Marketing	Feb or July	1 year	NZ\$26,720	NZ\$3340
Master of Professional Accountancy and Finance (C)	Feb or Aug	2 years	NZ\$26,720	NZ\$3340
Master of Quality Systems (C or R)	Feb	1.5 years	NZ\$36,920	NZ\$4750
Master of Science (C and R)				
Statistics	Feb or July	1.5 or 2 years	NZ\$26,720	NZ\$3340
Master of Speech and Language Therapy (R)	Feb	2 years	NZ\$33,830	NZ\$4220
Master of Sustainable Development Goals (subject to CUAP approval)				
Business Sustainability	Feb or July	1.5 years	NZ\$26,720	NZ\$3340
Disaster Management	Feb or July	1.5 years	NZ\$34,500	NZ\$4220
Environmental Sustainability	Feb or July	1.5 years	NZ\$31,410	NZ\$3920
Global Development	Feb or July	1.5 years	NZ\$26,170	NZ\$3270
Master of Veterinary Medicine (C)*				
Companion Animal	Feb or July	1 year	NZ\$55,580	NZ\$6940
Companion Animal Surgery	Feb or July	1 year	NZ\$55,580	NZ\$6940
Production Animal	Feb or July	1 year	NZ\$55,580	NZ\$6940
Without specialisation	Feb or July	1 year	NZ\$55,580	NZ\$6940

\* The MVM is equivalent to one year of study but due to course offerings this qualification is only available for part-time study and will take longer than one year to complete

# ENTRY REQUIREMENTS FOR INTERNATIONAL STUDENTS

## UNDERGRADUATE ACADEMIC ENTRANCE REQUIREMENTS

- > For most undergraduate level programmes, the minimum academic entry requirement is successful completion of a qualification equivalent to the New Zealand Year 13 - NCEA Level 3 University Entrance. International students need to check the equivalency of their secondary school qualification by reviewing the list of Academic Admission Requirements by Country.
- > International students who have previously studied at a New Zealand secondary school should refer to the secondary school requirements section.
- > International students who have completed a minimum of 4 x B's at level 5 or 6 in the New Zealand Diploma in Business may apply for entry into a Bachelor's programme.
  - An NZQA transcript as formal evidence of the NZDipBus results is required before credit will be assessed and only papers with a minimum grade of B will be assessed for credit.
  - The English language requirements can be met by:
    - » A minimum IELTS 5.5 (or equivalent) used to gain entry to the NZDipBus or,
    - » A recent IELTS 6.0 with no band score less than 5.5

## Graduate Diplomas

Admission to a Graduate Diploma requires successful completion of a three year diploma or undergraduate degree from a recognised tertiary institution.

## UNDERGRADUATE ENGLISH LANGUAGE ENTRANCE REQUIREMENTS

Students from a country where English is not the first language, must obtain a minimum English Language competency level. Some programmes require a higher level of English Language competency than the minimum requirement indicated.

Programme Level	IELTS	TOEFL iBT	PTE Academic	Cambridge English
Pre Degree and Foundation Certificate in Academic English (UG DEEP)	5.0 (no band less than 5.0)	61 overall (min 17 in Reading and Writing)	36 Overall (min 36 in communicative skills)	154 overall and all bands 154 or better
Foundation Certificate in Advanced Academic English (PG DEEP)	5.5 (no band less than 5.5)	70 overall (min 19 in Reading and Writing)	42 Overall (min 42 in communicative skills)	162 overall and all bands 162 or better
Certificate in Foundation Studies (Full Foundation)	5.5 (no band less than 5.0)	70 overall (min 17 in Writing)	42 Overall (min 36 in communicative skills)	162 overall and all bands 154 or better
Certificate of University Preparation (CUP) (Fast-track Foundation)	6.0 (no band less than 5.0)	80 overall (min 17 in Writing)	50 Overall (min 36 in communicative skills)	169 overall and all bands 154 or better
Undergraduate Level	6.0 (no band less than 5.5)	80 overall (min 19 in Writing)	50 Overall (min 42 in communicative skills)	169 overall and all bands 162 or better

Massey University recognises the following English Language examinations:

- > **International English Language Testing System (IELTS)**  
Only Academic IELTS scores are acceptable. A scanned copy of your academic IELTS scores is acceptable as Massey is able to verify your results online.
- > **Test of English as a Foreign Language (TOEFL)**  
A scanned copy of your TOEFL scores is acceptable as Massey is able to verify your results online. (This applies to iBT test results only)

Test scores for English proficiency are valid for two years from the test date.

If you have taken a test other than IELTS or TOEFL, include it with your Application for Admission as an International Student so that it may be considered.

International Students who qualify for admission with NCEA Level 3/ CIE from a New Zealand Secondary School do not need to present any additional English language evidence for general admission. IELTS can not be used as a substitute for literacy but will be required for programmes with a higher English language requirement in addition to meeting the literacy requirement (refer to the programme specific exceptions).

## POSTGRADUATE ACADEMIC ENTRANCE REQUIREMENTS

### Masters, postgraduate diplomas and postgraduate certificates.

An appropriate undergraduate degree from a recognised tertiary institution is required

### Doctorate degrees (PhD)

The equivalent or better of a relevant Bachelor's (Hons) or Master's Degree with First or Second Class Honours, Division 1 (B+ and above) with sufficient prior experience of independent research at postgraduate level

Programme Level	IELTS	TOEFL iBT	PTE Academic	Cambridge English
Postgraduate Level	6.5 (no band less than 6.0)	90 overall (min 20 in Writing)	58 Overall (min 50 in communicative skills)	176 overall and all bands 169 or better
DAAD (For German students only)	A minimum B grade in each section plus a letter of support from University			

Some colleges may specify a higher level of attainment for PhD applicants.

## INTERNATIONAL ARTICULATION PATHWAYS

Massey University has a large number of international partner articulation pathways into our programmes so you may be able to progress directly from your university into Massey University. We have programmes in the following countries/regions: Australia, Cambodia, Canada, China, Hong Kong, India, Indonesia, Japan, Macau, Malaysia, Singapore, Sri Lanka, Taiwan, Thailand, and Vietnam. [massey.ac.nz/iap](http://massey.ac.nz/iap)

## SCHOLARSHIPS

- > New Zealand Scholarships (for undergraduate or postgraduate study)
- > New Zealand Commonwealth Scholarship and Fellowship Plan (for postgraduate study)
- > Massey University Masterate Scholarship (for postgraduate study)
- > Massey University Doctoral Scholarships (for PhD study)
- > Higher Education Commission, Pakistan (for PhD study)
- > Chinese Scholarship Council (for PhD study)

[massey.ac.nz/internationalscholarships](http://massey.ac.nz/internationalscholarships)

Education New Zealand Scholarships: [enz.govt.nz/scholarships](http://enz.govt.nz/scholarships)

# ACADEMIC ENTRY REQUIREMENTS BY COUNTRY/REGION

COUNTRY	FOUNDATION ENTRY REQUIREMENTS	UNDERGRADUATE ENTRY REQUIREMENTS
Worldwide	International Baccalaureate (IB) with aggregate 21 in 6 subjects (average 3.5 on 1-7 scale). Cambridge International Examination or Advanced International Certificate of Education (CIE / AICE) with pass grades in 4 academic subjects.	International Baccalaureate (IB) with successful completion of a minimum 24 points. Cambridge International Examination or Advanced International Certificate of Education (CIE / AICE) A or AS levels, a minimum of 120 points from approved syllabus group list. And a minimum D grade or better in syllabuses from at least three different in each of at least 3 different syllabus groups (excluding Thinking Skills), as well as an E or better in AS English and a D grade in IGCSE or GCSE Mathematics. Taken in countries other than New Zealand (excluding United Kingdom): 3 A-levels including at least 1 C grade or better. A result in General Studies cannot be included among the 3 on which the application is based.
Australia	Successful completion of year 12 with a minimum TER (or ATAR), or equivalent of 50.	Successful completion of Year 12 with a minimum tertiary entrance rank (TER), ATAR or equivalent of 74.
Brazil	Certificado de Ensino Medio with 4 x B grade passes in academic subjects.	Successful completion of one year's tertiary study at a recognised institution.
Canada	Grade 12 Certificate.	General: High School graduation (Grade 12 Certificate) with minimum achievement of 60% average across 6 subjects including English. Ontario: Secondary Diploma with a minimum average 65% in grade 12, higher levels of achievement will be required for limited entry courses (such as Aviation). First year of CEGEP with 60% across 6 subjects including English. Students with the full 2 years of CEGEP with 60% across 6 subjects including English can be considered for admission plus credit.
China	Senior High School Year 3 Certificate of Graduation, minimum 70%. Or Completion of Senior High School Year 2 exams with superior grade of 80% average.	Senior High School graduation plus successful completion of one year bachelors level study from a recognised institution; or Successful completion of a two year Diploma, or a minimum of two years out of a three year Diploma from a recognised institution; or Completed Gaokao with a tier one score from the related province.
Chile	Licencia de Educacion Media with 4 x 6pt passes in academic subjects.	One year's successful bachelor degree level study at a recognised institution.
Colombia	Successful completion of High School Diploma with appropriate GPA.	Successful completion of one year's tertiary study at a recognised institution.
Denmark		Højere Forberedelseksamen (HF); or Højere Handelseksamen (HHX).
Fiji	Fiji School Leaving Certificate 65% in four academic subjects.	Fiji Form 7 Certificate: aggregate over four subjects of 250 marks out of 400, with a minimum of 50 in English; or USP foundation year in either science or social sciences with a grade average of B and no grade lower than C in the eight required courses; or USP Certificate IV in Business Leadership and Management – a completed Certificate IV in Business Leadership and Management and an earlier qualification at Level 5 or above on the Fiji National Qualifications Framework.
France	All applications considered on a case by case basis.	Successful completion of French Baccalaureate Diploma (Diplôme du Baccalauréat).
Germany	Mittlere Reife / Realschulabschluss.	Successful completion of Senior High School (Zeugnis der Allgemeinen Hochschulreife - Abitur).
Hong Kong	HK Certificate of Education, minimum 2C and 2D grades or equivalent. Or HKDSE, five subjects comprising of three academic subjects and two electives, two out of the five subjects must be at level 2 or higher.	Three Hong Kong Advanced Level passes with one at grade C or higher in academic subjects; or Hong Kong Diploma of Secondary Education: Score of 15, based on aggregate of the applicant's best five subjects (i.e. five subjects at an average Level 3 in each subject) from any combination of Core and Category A and C electives but excluding Category B (Applied Learning) subjects.
India	All India Senior Secondary Higher Secondary School Certificate (HSC) (Year 12), minimum 65% over four academic subjects OR All India Senior Secondary Higher Secondary School Certificate (HSC) (Year 12), minimum 75% over 3 academic subjects.	All India Senior School Certificate (AISSC) or Indian School Certificate (ISC) Year 12 with an overall average of 75% and a minimum of 60% in English.
Iran	Successful completion of 3 year High School Diploma with an average of 12 or above.	One year's successful bachelor degree level study at a recognised institution OR High School Diploma and a pre-university Certificate with a GPA of 14/20 or above OR Kardani Associate Degree with a minimum GPA of 14
Indonesia	Sekolah Menengah Atas (SMA) with a minimum GPA of 7.0.	Successful completion of one year's tertiary study at a recognised institution; or A minimum of 8.5 of Sekolah Menengah Atas (SMA).
Japan	Upper Secondary School Leaving Certificate (Kotogakko Sotsugyo Shomeisho) with a C average.	Applicants must meet 1 of the following requirements: (a) completion of a High School Diploma with a B average; or (b) 1 year of successful study at a Japanese university; or (c) completion of a junior college diploma of 2 or 3 years' duration.



COUNTRY	FOUNDATION ENTRY REQUIREMENTS	UNDERGRADUATE ENTRY REQUIREMENTS
Kuwait		Successful completion of General Secondary Education Certificate (GSEC) with an overall average of 80% over approved academic subjects.
Latin America	Successful completion of High School Diploma with appropriate GPA.	Successful completion of one year's tertiary study at a recognised institution.
Malaysia	SPM: Grade 4 average in five subjects, or, UEC: Grade 6 average over five subjects.	STPM 3 principal passes, or, UEC with a maximum of 20 points over best five subjects, or GCE A levels with at least 3 results with 1 grade at Level C or above, or, SAM (or equivalent) with a minimum tertiary entrance rank of 74.
Mexico	All applications considered on a case by case basis.	One year's successful bachelor degree level study at a recognised institution of university standing with good passing grades.
New Zealand	50 NCEA credits at Level 2 in approved subjects, including 14 credits at Level 1 or higher in each of Mathematics and English.	National Certificate in Educational Achievement, University Entrance.
Oman	General Secondary School Leaving Certificate with 70% average in best five subjects (excluding Arabic/Islamic Education) and 70% in math.	Successful completion of a two year diploma at an internationally recognised tertiary institution.
Pakistan	International/Higher Secondary Certificate with 60% average (B grade or Division 1).	Successful completion of one year's study at an internationally recognised tertiary institution.
Papua New Guinea	Higher School Certificate with Grade B in five academic subjects.	Successful completion of one year study at an internationally recognised tertiary institution. Successful completion of the South Pacific Form 7 Certificate (with three or more B grades in academic subjects).
Philippines	Secondary School with Superior Grades (grade B) in Year 4.	Successful completion of one year study at an internationally recognised tertiary institution.
Russia	Certificate of Secondary Education with a Grade 4 average.	Successful completion of one year study at an internationally recognised tertiary institution.
Saudi Arabia	General Secondary Education Certificate with a Very Good grade (75%) over four best academic subjects.	Successful completion of either an undergraduate diploma or an associate degree at a recognised tertiary institution.
Singapore	GCE O-level Grade B4 over four subjects.	A minimum of three H2 passes at C grade; or Successful completion of NUS High School Diploma.
Solomon Islands	Completion of Secondary School with a B average.	USP foundation year in either science or social science with a grade average of B or higher and no grade lower than C in the eight required courses.
South Africa	National Senior Certificate with 2 x Achievement levels 6 (70-79%) and 2 x Achievement levels 5 (60-69%).	Successful completion of the South African National Senior Certificate that enables entry to university.
South Korea	High school diploma with a C average.	Korean University Entrance examination, minimum of 250 for general degrees, higher scores may be needed for specialist programmes.
South Pacific countries	Completion of South Pacific Form 7 Certificate.	South Pacific Form 7 Certificate: 3 or more B grades in academic subjects with a minimum of Grade 5 in PSSC English and Grade 6 in PSSC maths OR Successful completion of USP Foundation Year.
Sri Lanka	GCE O-levels with credit grade in four subjects.	GCE A-levels with a minimum of three credit passes.
Taiwan	Completion of Senior High School Year 2 exams with an 80% average Or Senior High School Year 3 with a C average (70%)	Applicants must have satisfactorily completed (a) 1 year of university or (b) senior high school and a 2-year junior college diploma or (c) junior high school and a 5-year junior college diploma.
Thailand	Matayom 6 with grade average of 2.5.	Successful completion of one year's tertiary study at an internationally recognised tertiary institution.
Tonga	Successful completion of Form 7.	Successful completion of the USP Foundation Programme OR South Pacific Form Seven Certificate: 3 or more B grades in academic subjects with a minimum of grade 5 in PSSC English and grade 6 in PSSC maths (grade 1 is highest) OR Tonga National Form Seven Certificate: 3 or more B grades in academic subjects.
UK	GCSE with two x B and two x C grades.	3 'A' + 1 GCSE at Grade C or above.
USA	High School Diploma.	Successful completion of High School Diploma from an accredited high school, plus a minimum ACT composite score of 24 or a minimum SAT result of 1100 out of 1600 (new SAT scores) or 1650 out of 2400 (old SAT scores) (Aggregate of Evidence-Based Reading and Writing, and Mathematics scores in SAT Reasoning Tests taken from March 2016, or the Critical Reading and Mathematics scores in SAT Reasoning Tests taken prior to March 2016.
Vietnam	Upper Senior Secondary Graduation Diploma/ Bang Tot Ngiep Trung hoc Pho thong with grade of 6 out of 10.	Completion of Bang Tot Ngiep Trung hoc Pho thong (Vietnam Upper Senior Secondary Graduation Diploma) with 8 out of 10 in their Secondary School Leaving Examination, (SSLE), (Thi Tot Nghiep Pho thong Trung hoc). OR Successful completion of one year's study at a recognised tertiary institution.

# HOW TO APPLY

1

Choose your programme and check you meet the academic and English language entry requirements for admission.  
[massey.ac.nz/international](http://massey.ac.nz/international)

2

Apply online anytime at [massey.ac.nz/apply](http://massey.ac.nz/apply)  
> Closing date for Semester One (February start) is 1 December  
> Closing date for Semester Two (July start) is 1 May  
Note: some programmes have earlier application deadlines  
> Supply any necessary supporting documents  
> You can also apply through a registered agent. Email [international@massey.ac.nz](mailto:international@massey.ac.nz) for a list of agents in your country

3

Offer of place  
> Once your application is complete, and we have received all necessary documentation, we will assess it  
> If successful we will issue you an offer of place

4

Accept your offer of place by following the instructions in your offer letter.

5

Pay your tuition fees - we will then issue a receipt of payment you can use for visa purposes.

6

> Apply for your visa via one of our agents, or directly with NZ immigration at [nzready.immigration.govt.nz](http://nzready.immigration.govt.nz)

7

> If you wish to apply for on-campus accommodation or homestay visit [massey.ac.nz/accommodation](http://massey.ac.nz/accommodation)  
> Accept your offer of accommodation and pay your deposit  
> Pay your accommodation fees prior to arrival

8

Arrive on campus, attend orientation and start your study!  
> Semester One, 2020, starts 24 February  
> Semester Two, 2020, starts 13 July

We will remain in communication with you throughout this process, but if you have any queries along the way please contact us.

[international@massey.ac.nz](mailto:international@massey.ac.nz)  
[massey.ac.nz/international](http://massey.ac.nz/international)



+64 6 350 5701

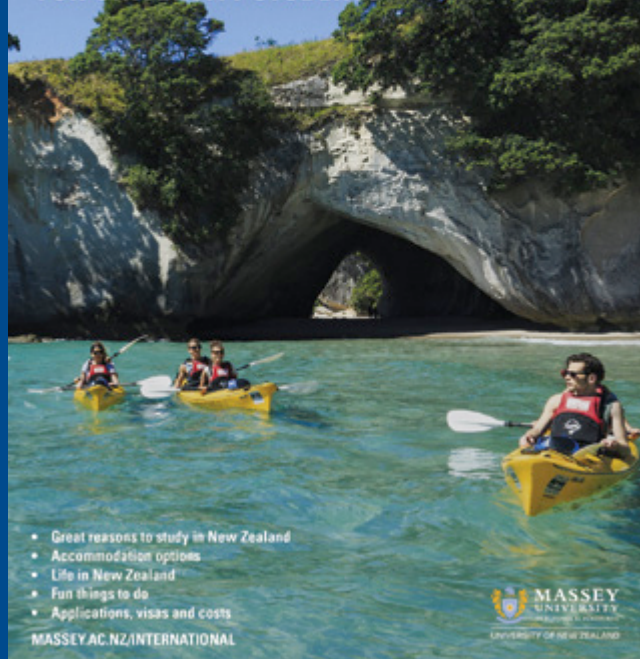


[international@massey.ac.nz](mailto:international@massey.ac.nz)



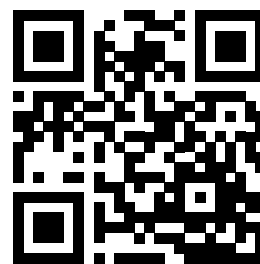
[massey.ac.nz/international](http://massey.ac.nz/international)

## GUIDE TO STUDYING IN NEW ZEALAND FOR UNIVERSITY STUDENTS



## GET THE GUIDE TO STUDYING IN NEW ZEALAND EBOOK

Scan the code or visit [massey.ac.nz/hello](http://massey.ac.nz/hello)



[facebook.com/masseyinternational](https://facebook.com/masseyinternational)



[twitter.com/masseyintoffice](https://twitter.com/masseyintoffice)



[MasseyUniversityNZ](https://MasseyUniversityNZ)



[weibo.com/masseyuni](https://weibo.com/masseyuni)



[i.youku.com/MasseyUniversity](https://i.youku.com/MasseyUniversity)



[youtube.com/masseyuniversity](https://youtube.com/masseyuniversity)

